

SHEET NOTES

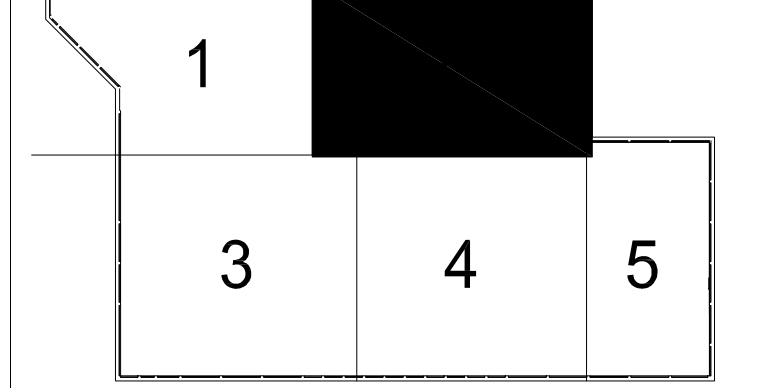
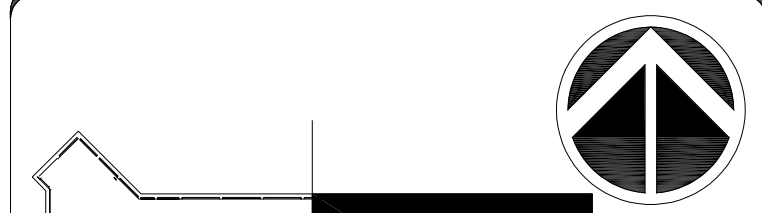
KEYNOTES

- TELECOM CABLING CONTRACTOR SHALL UTILIZE EXISTING PATHWAY SLEEVES, CONDUITS, TRAYS, HOOKS, RINGS, AND OTHER PATHWAY SUPPORT HARDWARE THAT HAS BEEN VACATED FROM CABLE DEMO ACTIVITIES TO THE GREATEST EXTENT POSSIBLE. SUPPLEMENT WITH NEW J-HOOK HARDWARE ONLY WHERE NECESSARY.
- TERMINATE NEW TELECOM CABLING FROM 3120, 3036, AND OPS SUITE 3112C, INCLUDING SURROUNDING OFFICES, IN TELECOM ROOM 3223 ON NEW RJ45 PATCH PANELS.
- PROVIDE (1) 48-PORT PATCH PANEL AND (1) 24-PORT PATCH PANEL FOR NEW SUB-LEVEL 3 VOICE AND DATA CABLING. PROVIDE (1) 24-PORT PATCH PANEL FOR NEW SUB-LEVEL 3 WAP CABLING.

- TERMINATE SECURITY SYSTEM MANAGEMENT WORK STATION DROP SET ON PATCH PANEL IN 2-POST RACK IN SECURITY SERVER ROOM 1037A



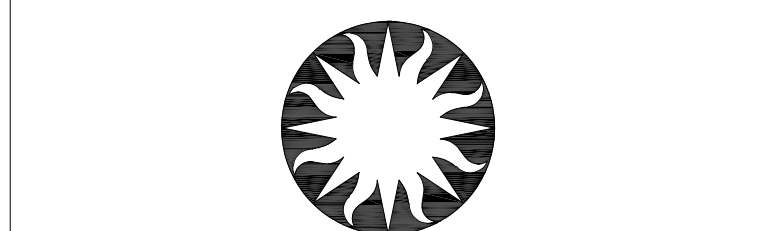
GHD Inc.
14585 Avion Prkwy Suite 150 Chantilly Virginia USA
T 1 571 325 5000 W www.ghd.com



KEY PLAN

GRAPHIC SCALE(S)

DATE	SUBMISSION
04/08/22	FINAL CD
REVISION # DATE	REVISION DESCRIPTION
1	FF&E UPDATES



Smithsonian Institution
Smithsonian Facilities
600 Maryland Avenue S.W. Suite 5001
Washington, DC 20024-2520

BUILDING NAME	FREER/SACKLER/AFA/QUAD
ADDRESS	SW WASHINGTON, DC 20560
PROJECT TITLE	FREER/SACKLER/AFA/ QUAD ESS MODERNIZATION
SF PROJECT NUMBER	1909101
A/E PROJECT NUMBER	11203201
DRAWING TITLE	SUBLEVEL 3 PLAN - AREA 2 - TELECOM - PHASE 1
WORKING STAFF	WD SK DB
DESIGNED BY	DRAWN BY
CHECKED BY	
SHEET NO.	TN103FPP1
134 of 179	

SUBLEVEL 03 - AREA 2 - TELECOM - PHASE 1

SCALE = 1/8" = 1'-0"

6/9/2022 4:50:42 PM
TN103FPP1 BY: Approver: 04/08/22 FINAL CD

A1
TN103FPP1