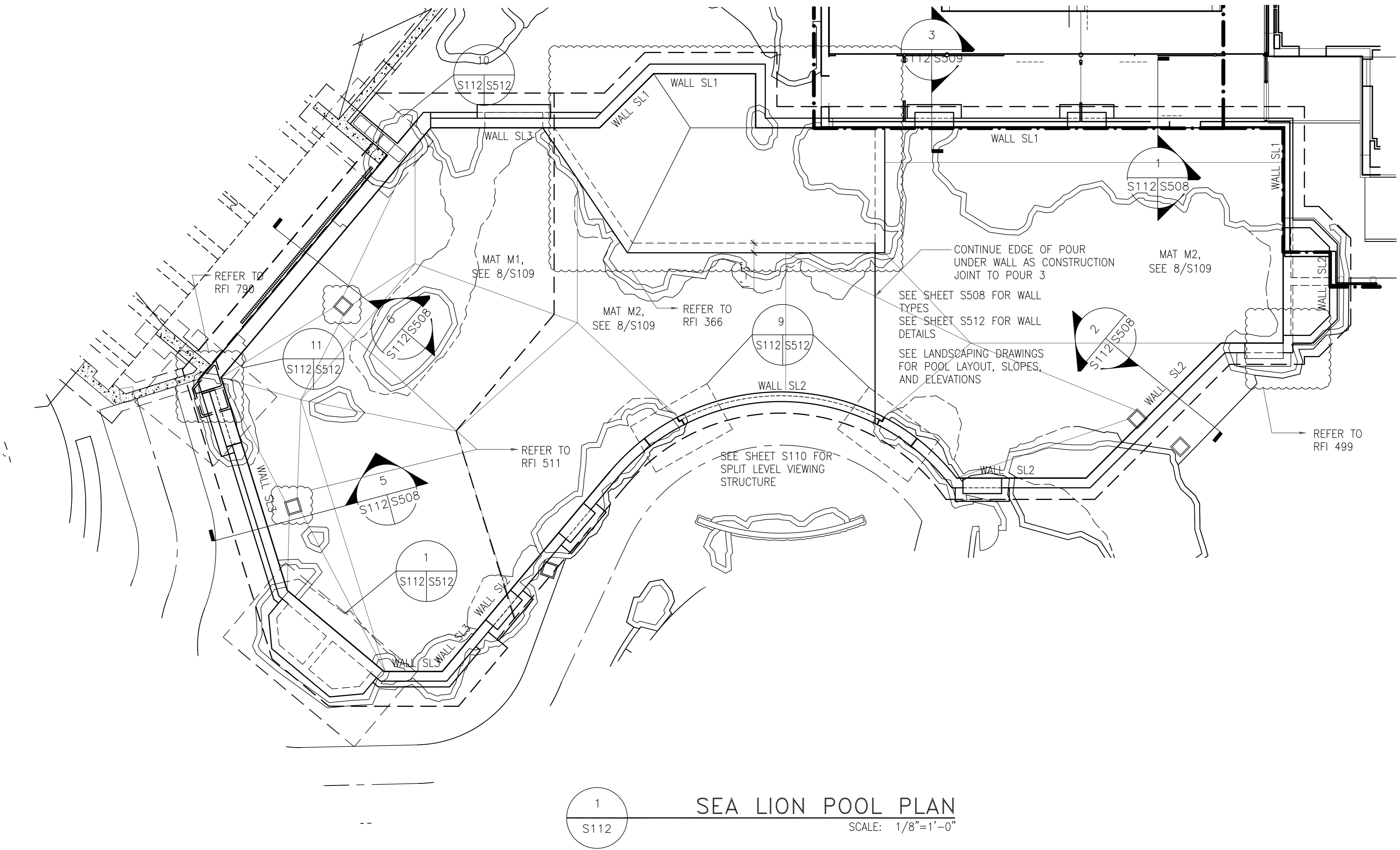


2 SEAL POOL PLAN
S112 SCALE: 1/8"=1'-0"

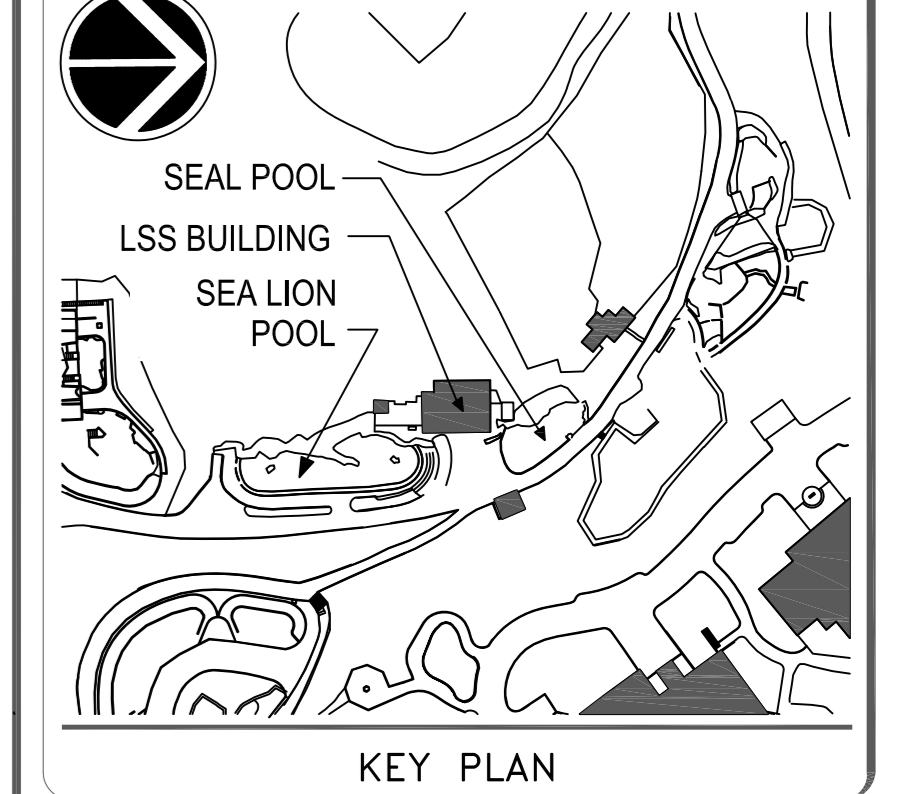


1 SEA LION POOL PLAN
S112 SCALE: 1/8"=1'-0"

QUINN EVANS ARCHITECTS
1214 Twenty-eighth Street, NW
Washington, DC 20029
202 298 6700

McMullan & Associates Consulting Structural Engineers
8381 OLD COTTAGE RD.
VIENNA, VA 22182-3628
PHONE: (703) 556-0651
FAX: (703) 556-0651
© COPYRIGHT 2008 McMULLAN & Associates Inc. ALL RIGHTS RESERVED WORLDWIDE

AS BUILT



GRAPHIC SCALE(S)

| | | | |
|------------|----------|----------|-----------------|
| DATE | 07/02/09 | REVISION | FINAL DOCUMENTS |
| REVISION 1 | | REVISION | |
| REVISION 2 | | REVISION | |
| REVISION 3 | | REVISION | |
| REVISION 4 | | REVISION | |
| REVISION 5 | | REVISION | |
| REVISION 6 | | REVISION | |
| REVISION 7 | | REVISION | |

Smithsonian Institution

Office of Facilities Engineering and Operations
600 Maryland Avenue S.W., Suite 5001
Washington DC 20024-2520

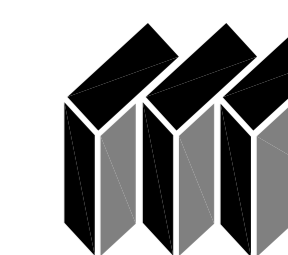
| | |
|---------------------|--|
| BUILDING NAME | SEAL & SEA LION BUILDING |
| ADDRESS | SMITHSONIAN NATIONAL ZOO 3001 CONN. AVENUE, NW |
| PROJECT TITLE | SEAL/SEA LION LIFE SUPPORT, FACILITY, AND SITE RENEWAL |
| DATE PROJECT NUMBER | 0533148 |
| A/E PROJECT NUMBER | 06221.02 |
| DRAWING TITLE | SEAL POOL PLAN AND SPLIT LEVEL VIEWING FRAMING PLANS |
| DRAWING TYPE | STRUCTURAL |
| WORKING START | DESIGNED BY: JW DRAWN BY: DB CHECKED BY: |
| SHEET NO. | S 1 12 |
| 168 OF 375 | SUBPLATE TYPE SEQUENCE |

Note: This Electronic Information is made available to for informational purposes only. Neither Forester Construction nor any other party whatsoever accepts any responsibility for the accuracy, adequacy, sufficiency, compliance with applicable law, or any error or omission in, any information contained in the Electronic Document. Neither Forester Construction nor any other party make any warranties whatsoever with respect to the Information (and hereby disclaim any implied warranties, including any implied warranty of accuracy), and any use of the Electronic Information shall be at users sole risk. This is not a Contract Document and, before using the Electronic Information, the user shall check the Electronic Information for consistency with the Contract Documents. The user agrees to defend and indemnify Forester Construction from and against all claims, liabilities, losses, damages and costs, including attorneys' fees, arising out of the use of the Electronic Information. Forester Construction does not permit use of this document in providing services or materials for any Project, and does not provide the right to use this document in preparation of any Derivative Documents.



QUINN EVANS
ARCHITECTS

1214 Twenty-eighth
Street, NW
Washington, DC
202 298 6700/202 298 6666
www.quinn-evans.com

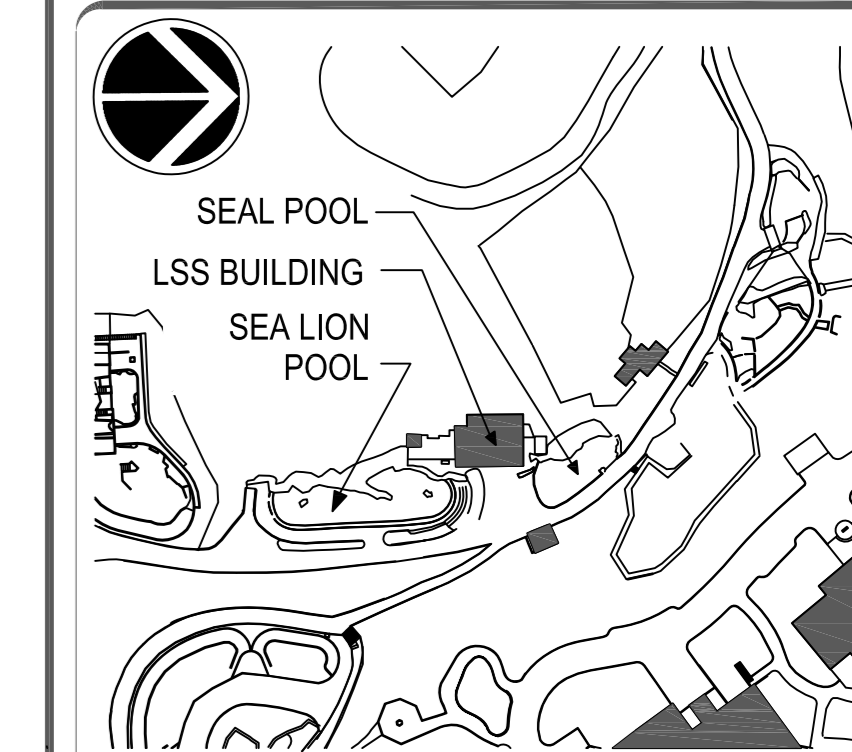


McMullan & Associates
Consulting Structural Engineers

801 OLD COURTHOUSE RD.
VIENNA, VA 22182-5009
PHONE: (703) 556-0651
FAX: (703) 556-0651

© COPYRIGHT 2008 McMullan & Associates Inc.
ALL RIGHTS RESERVED WORLDWIDE

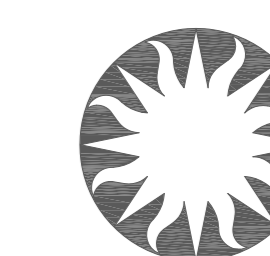
AS BUILT



KEY PLAN

GRAPHIC SCALE(S)

| DATE | SUBMISSION |
|------------|-----------------|
| 07/02/09 | FINAL DOCUMENTS |
| REVISION 1 | REVISION |
| REVISION 2 | REVISION |
| REVISION 3 | REVISION |
| REVISION 4 | REVISION |
| REVISION 5 | REVISION |
| REVISION 6 | REVISION |
| REVISION 7 | REVISION |



Smithsonian
Institution

Office of Facilities Engineering and Operations
600 Maryland Avenue S.W. Suite 5001
Washington DC 20024-2520

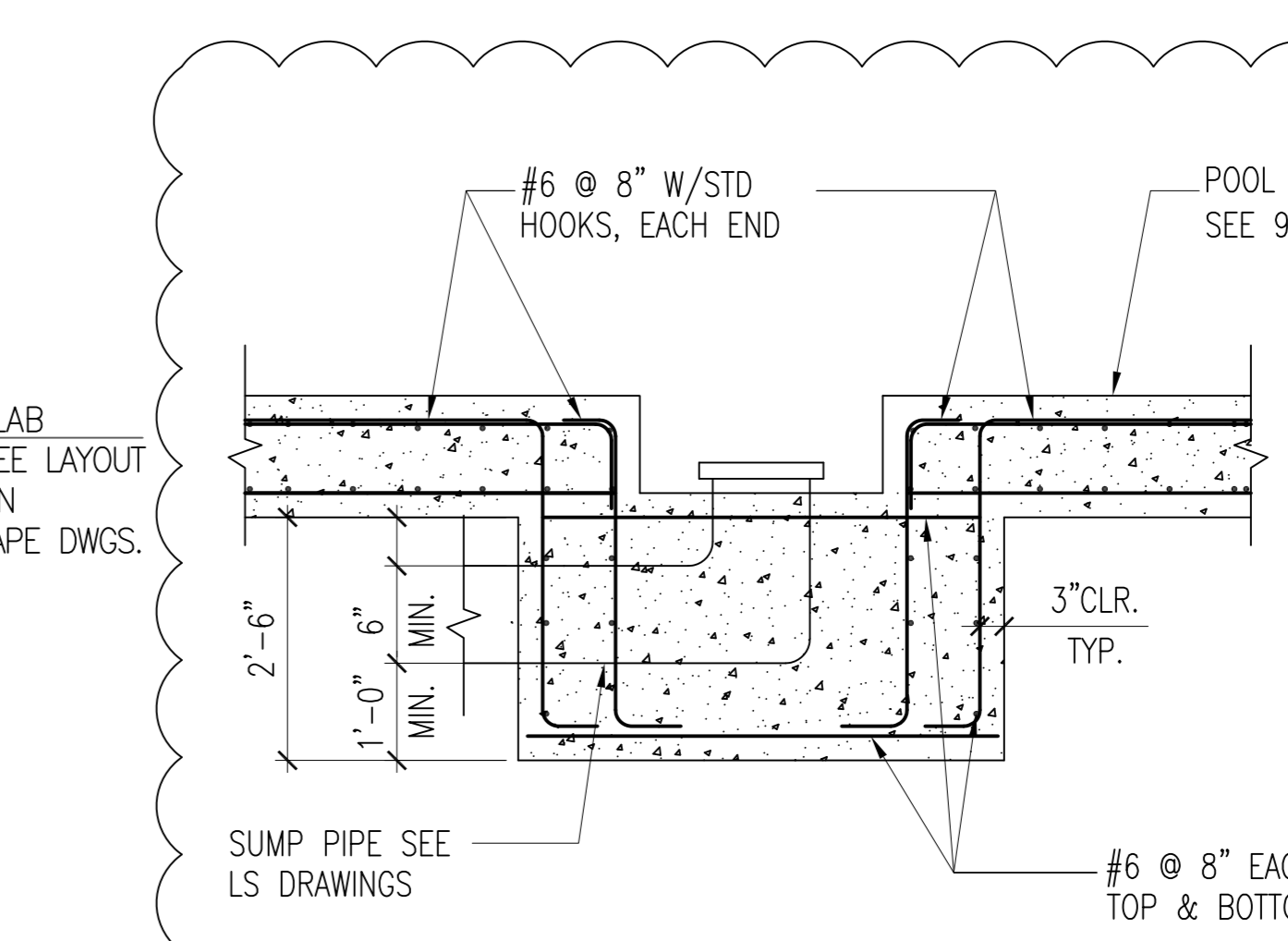
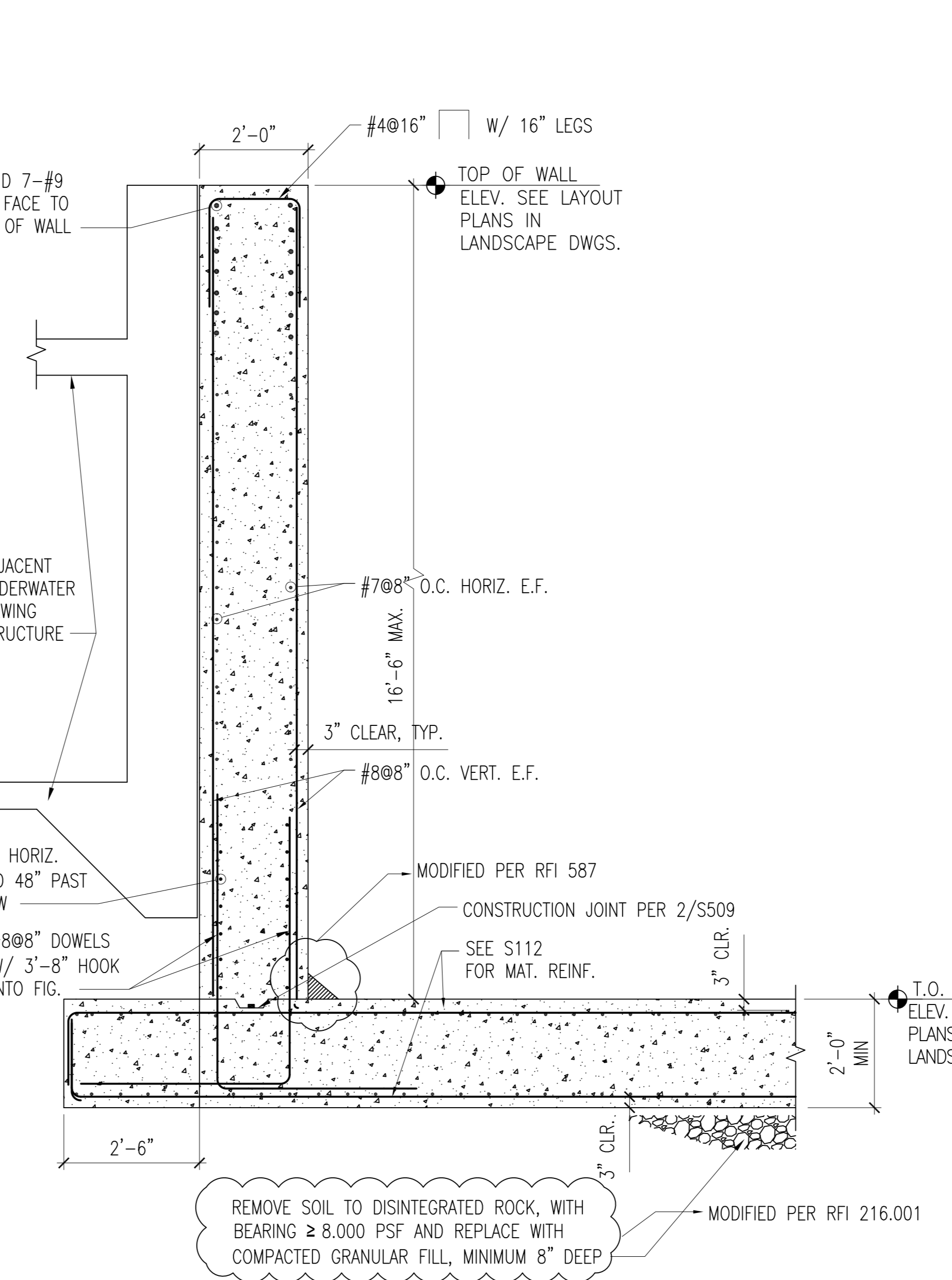
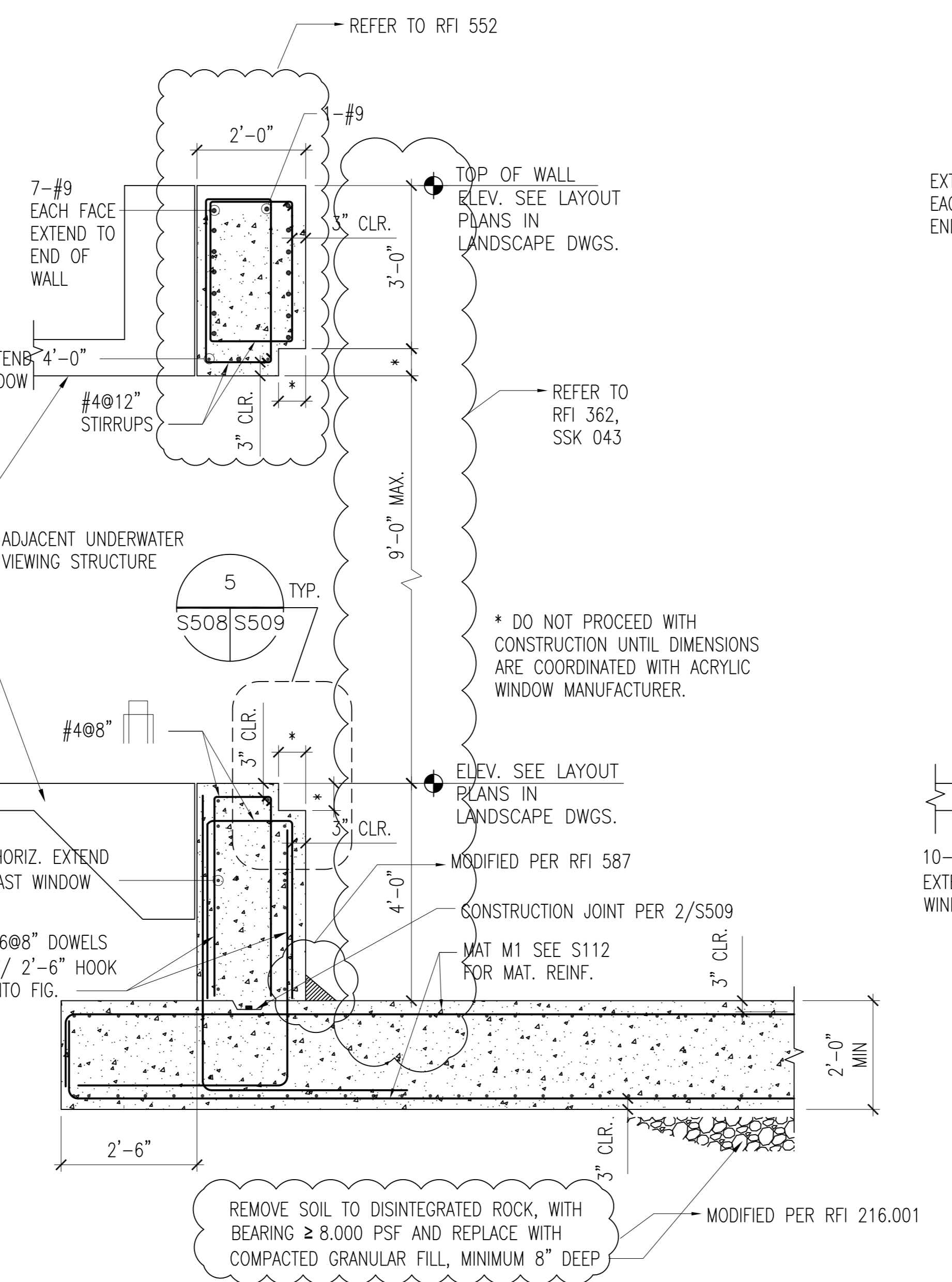
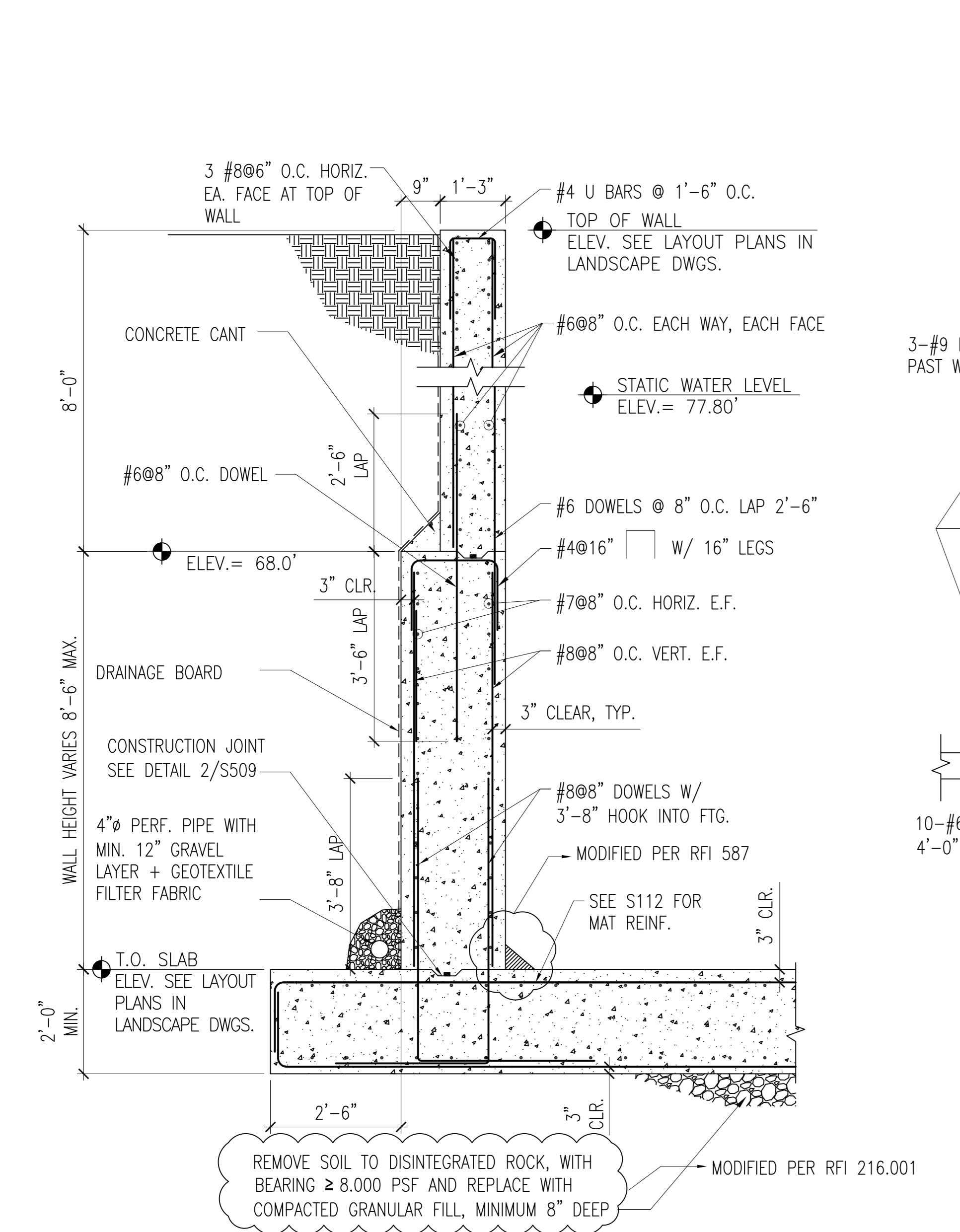
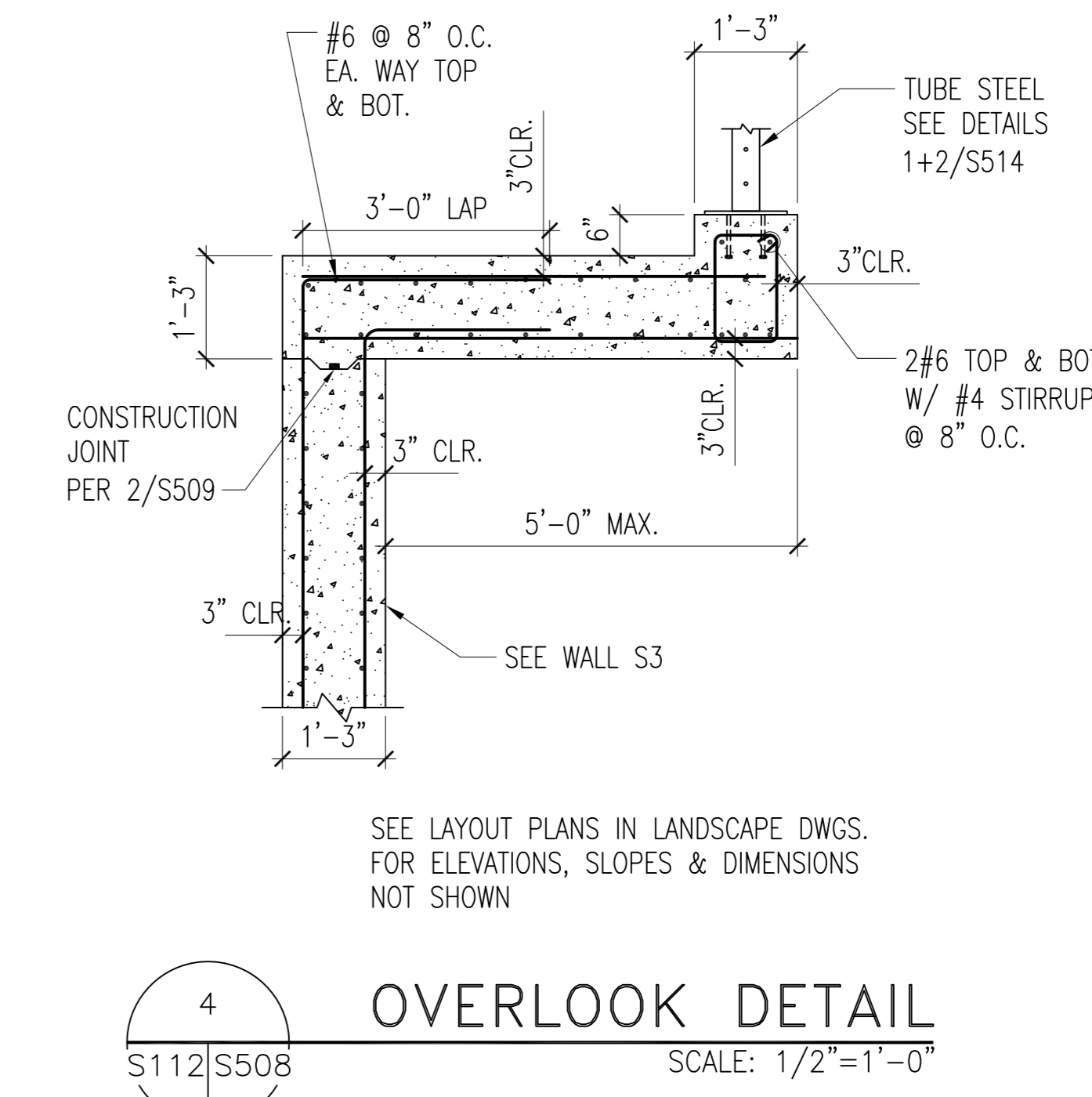
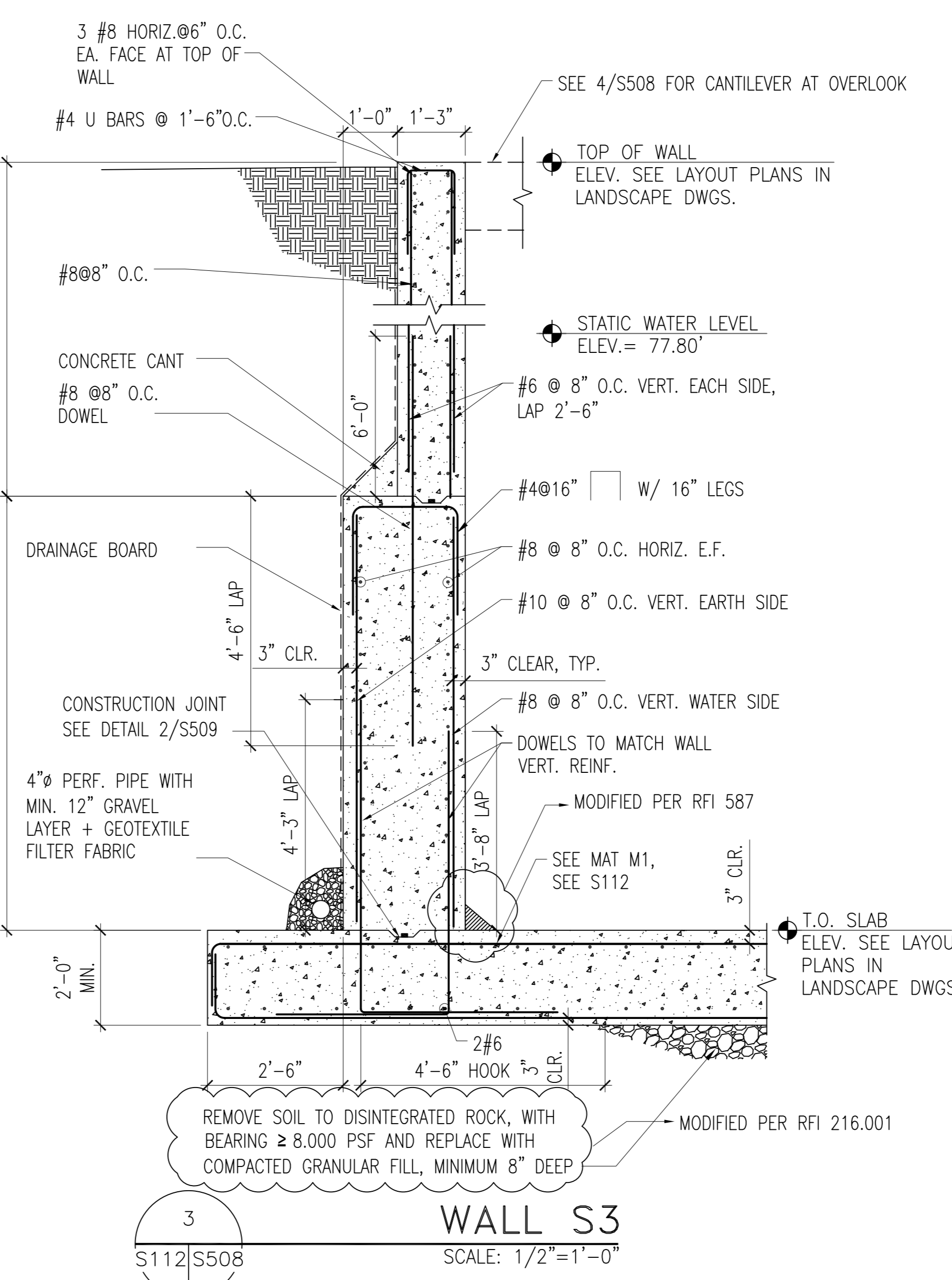
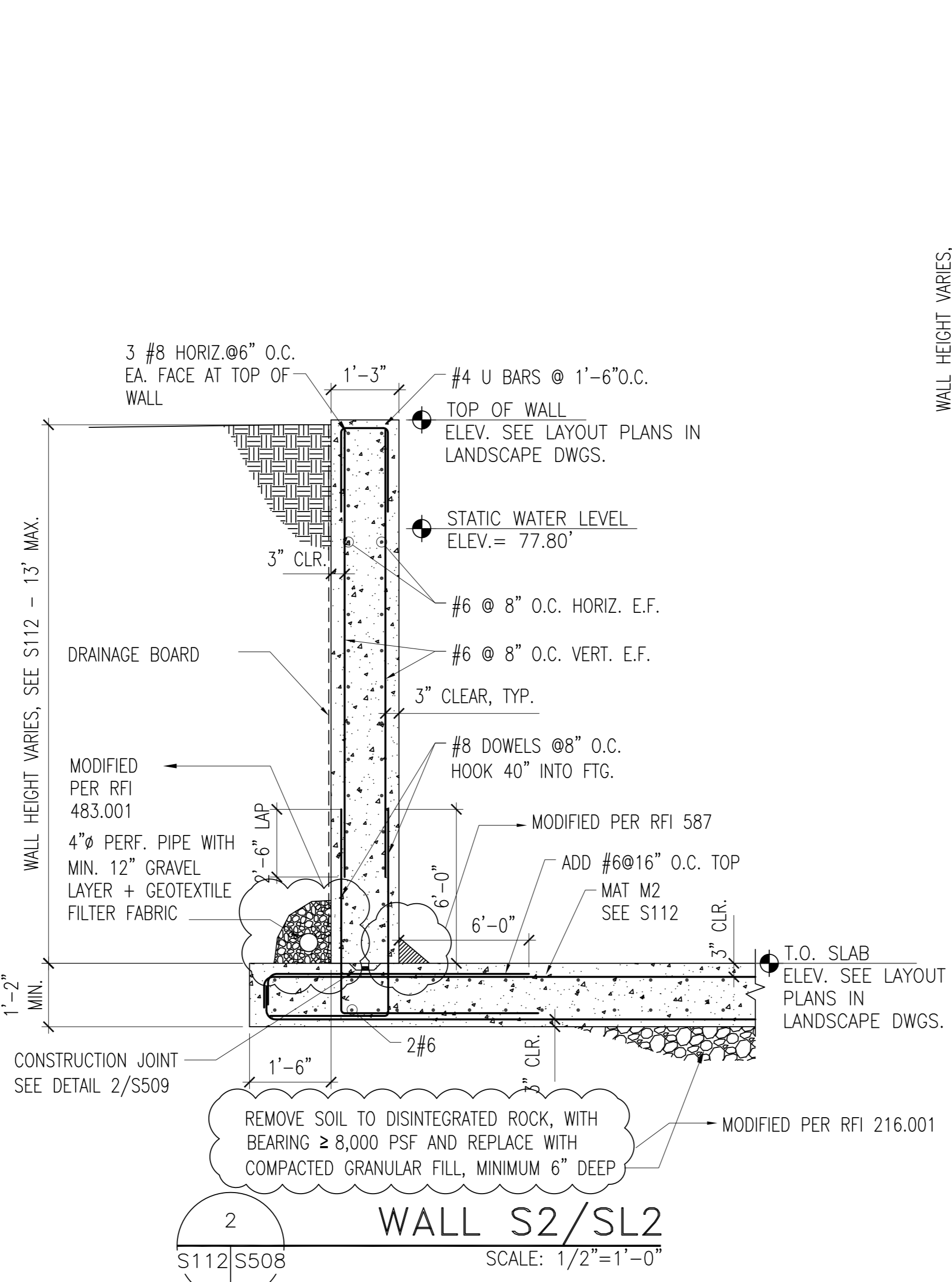
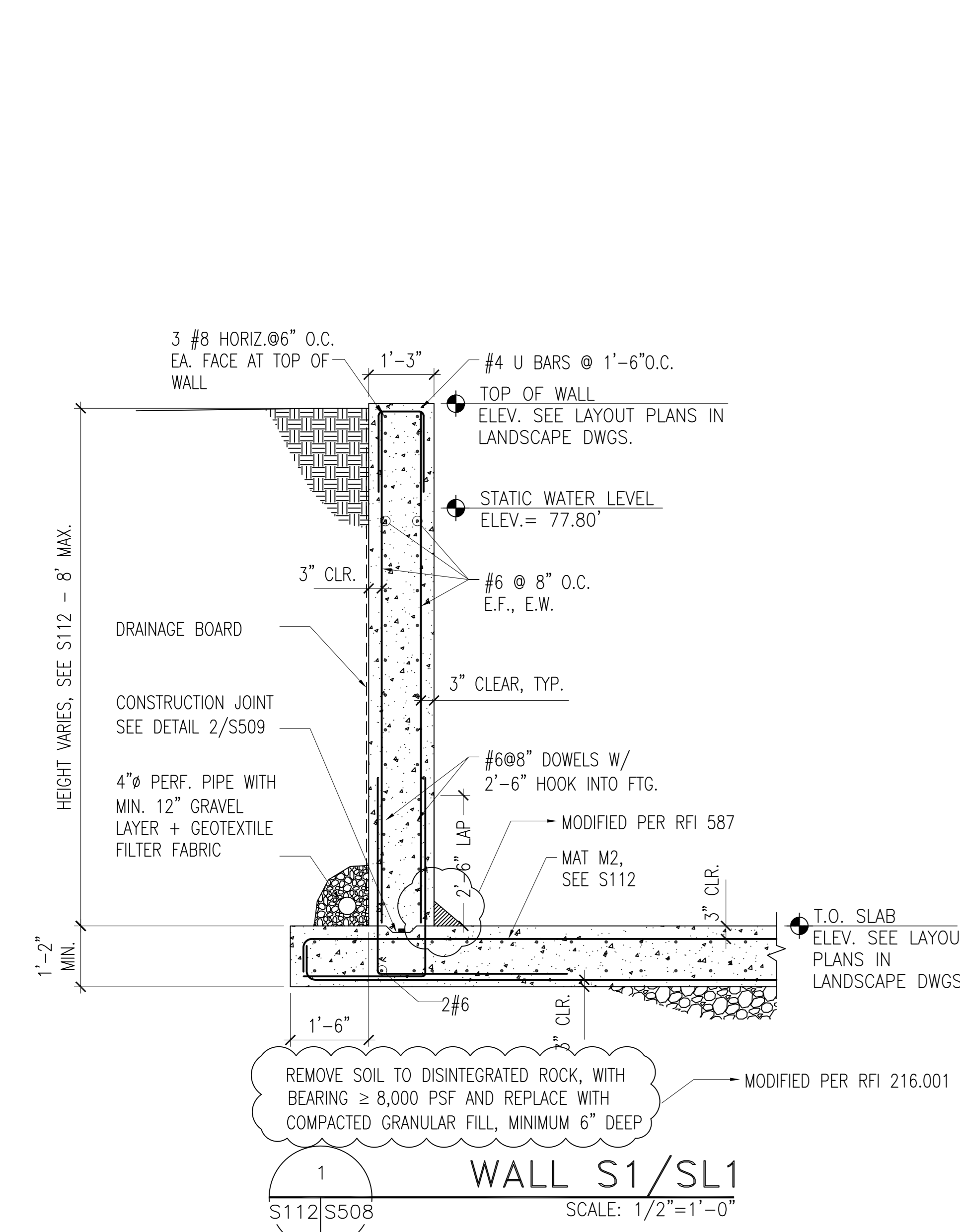
BUILDING NAME: SEAL & SEA LION BUILDING
ADDRESS: SMITHSONIAN NATIONAL ZOO
3001 CONN. AVENUE, NW

PROJECT TITLE: SEAL/SEA LION LIFE SUPPORT,
FACILITY, AND SITE RENEWAL
CDED PROJECT NUMBER: 0533148
A/E PROJECT NUMBER: 06221.02

DRAWING TITLE: SECTIONS & DETAILS

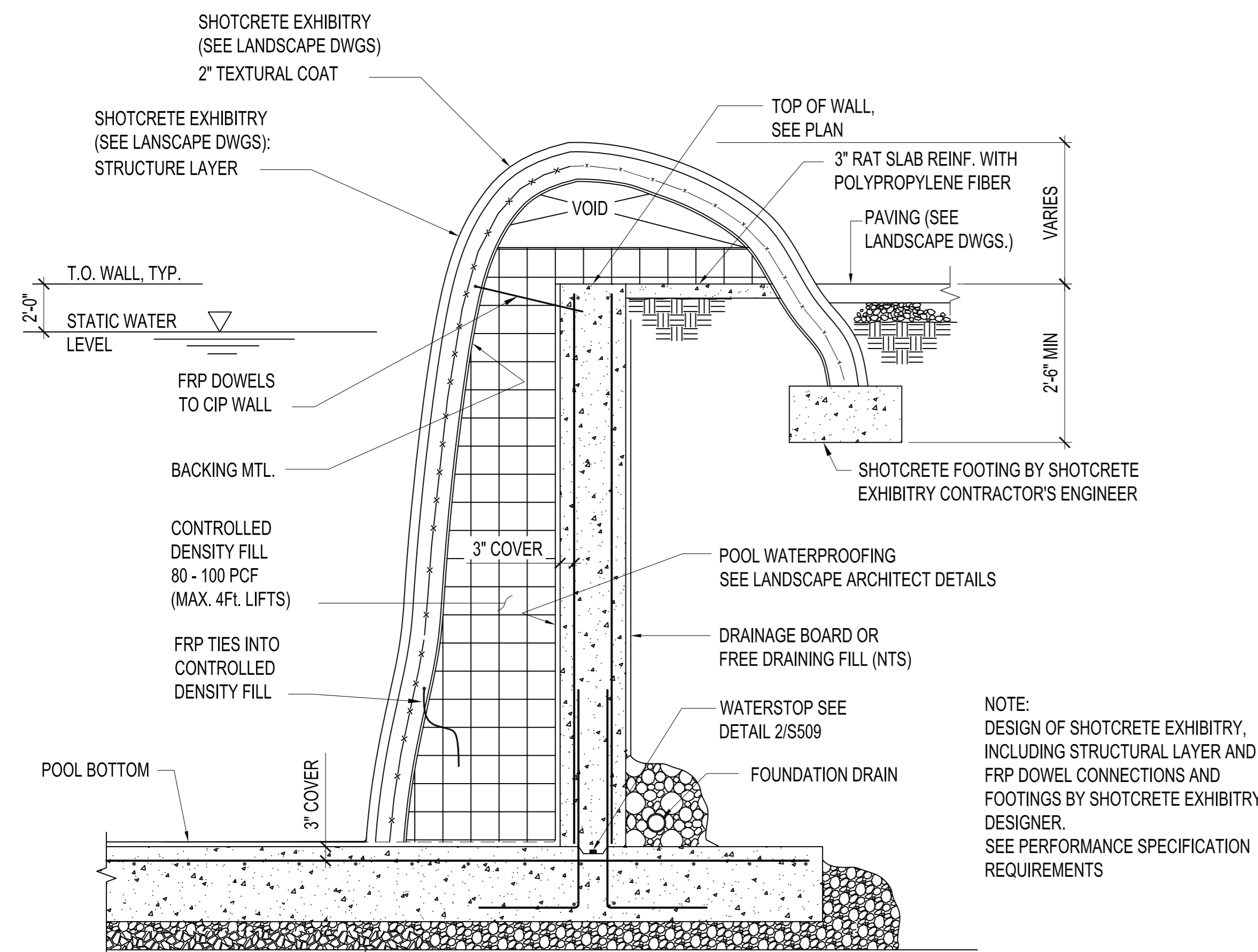
DRAWING TYPE: STRUCTURAL
WORKING STATE: DW

SHEET NO.: S 5 08
181 OF 375



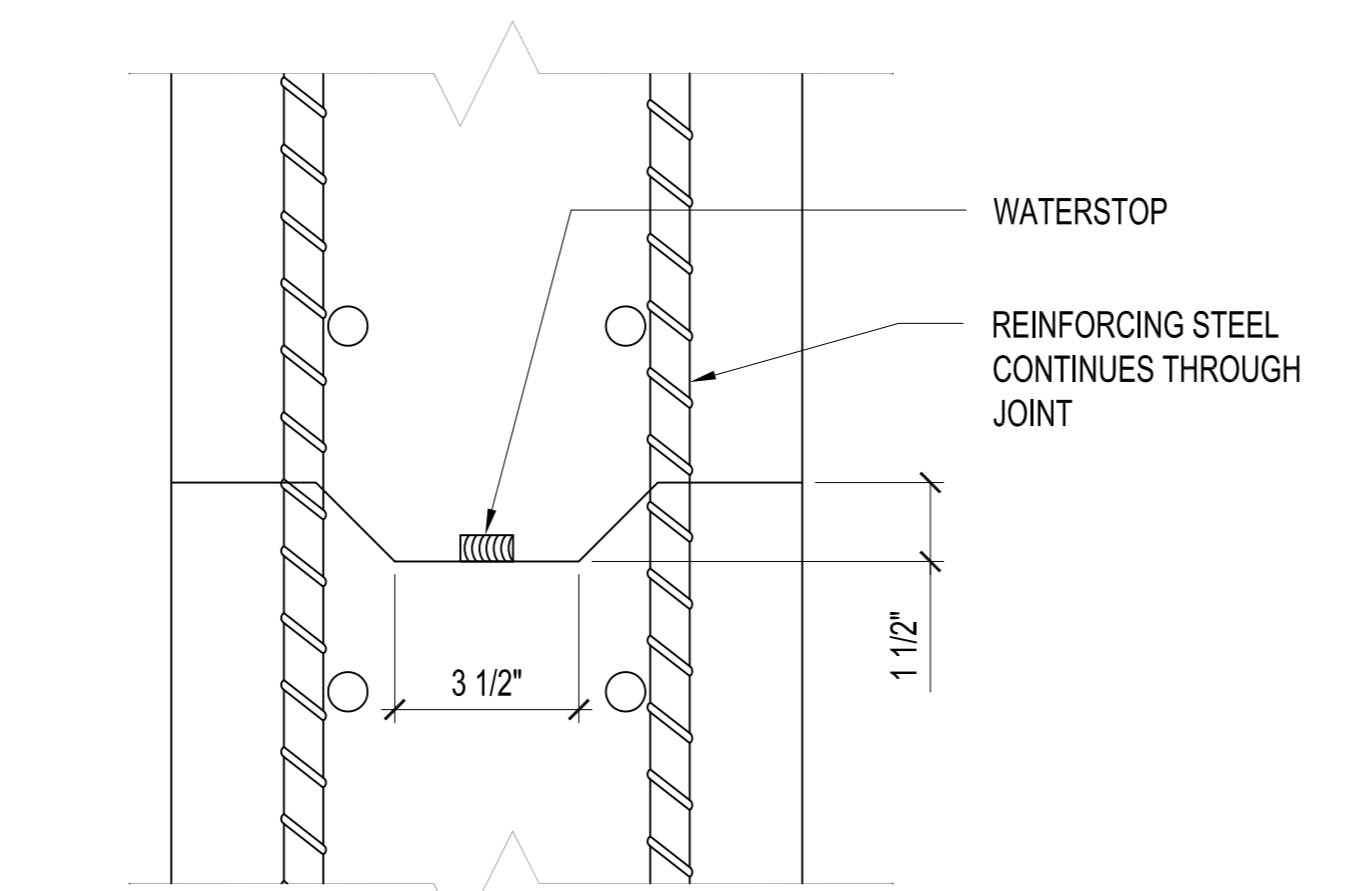
Note: This Electronic Information is made available to you for informational purposes only. Neither Forrester Construction nor any other party who accepts any responsibility for the accuracy, adequacy, sufficiency, compliance with applicable law, or any error or omission in, any information contained in the Electronic Document. Neither Forrester Construction nor any other party make any warranties whatsoever with respect to the information (and hereby disclaim any implied warranties, including any implied warranty of accuracy), and any use of the Electronic Information shall be at users sole risk. This is not a Contract Document and, before using the Electronic Information, the user shall check the Electronic Information for consistency with the Contract Documents. The user agrees to defend and indemnify Forrester Construction from and against all claims, liabilities, losses, damages and costs, including attorneys' fees, arising out of the use of the Electronic Information. Forrester Construction does not permit use of this document in providing services or materials for any Project, and does not provide the right to use this document in preparation of any Derivative Documents.

Z:\PROJECTS\SEA, SEA LION - (AS BUILT)\WORKBOOKS - STRUCTURAL\2472-12.MXD - S508.DWG



1 TYP. POOL WALL
SCALE: 1/2"=1'-0"
S112/S509

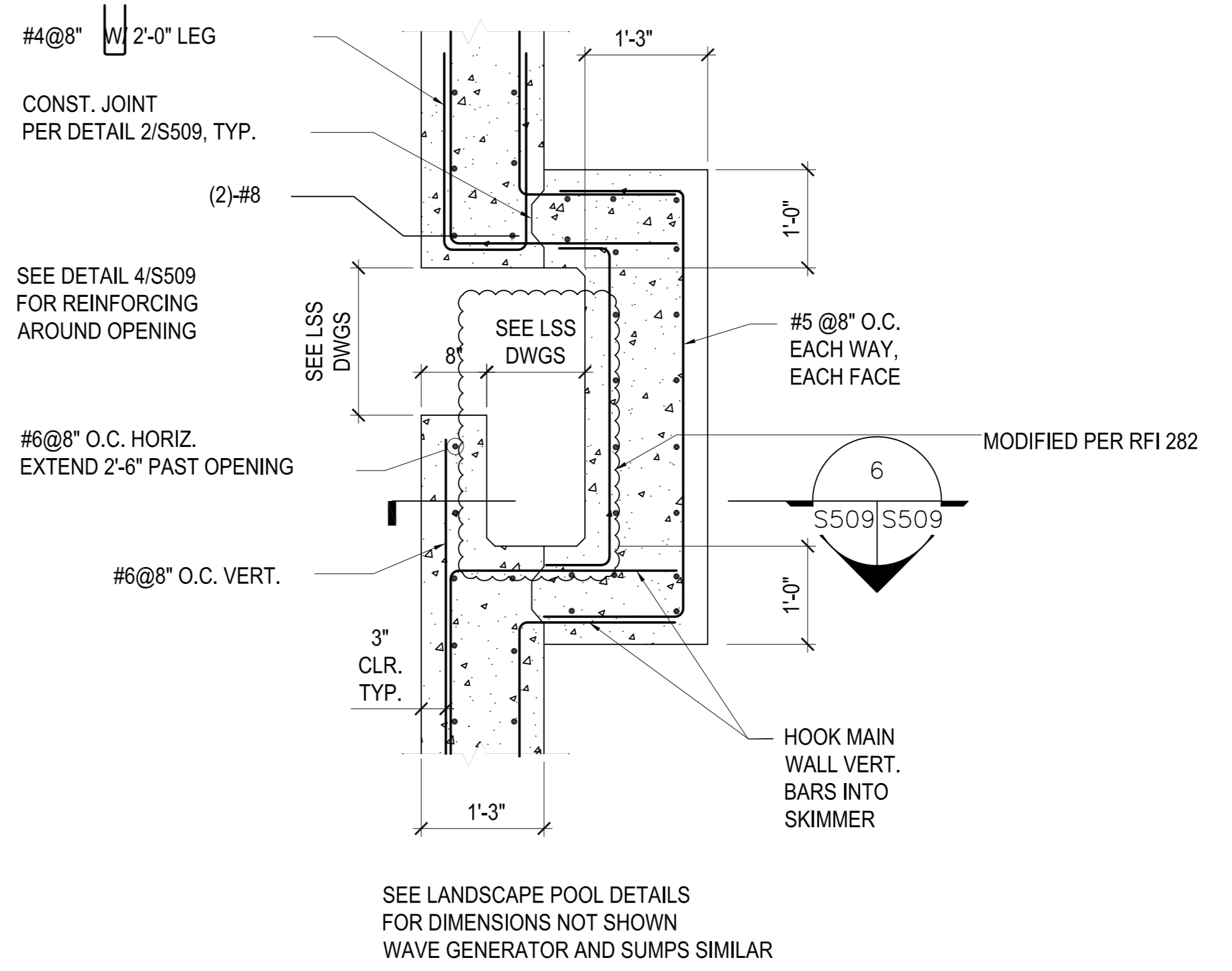
PROVIDE COMPACTED GRANULAR FILL, OR AT CUT INTO EXISTING ROCK OR DECOMPOSED ROCK, PROVIDE 12" DRAINAGE LAYER.
SEE SHEET S112 FOR POOL PLANS
SEE SHEET S508 FOR POOL WALL SECTIONS
MODIFIED PER RFI 216.001



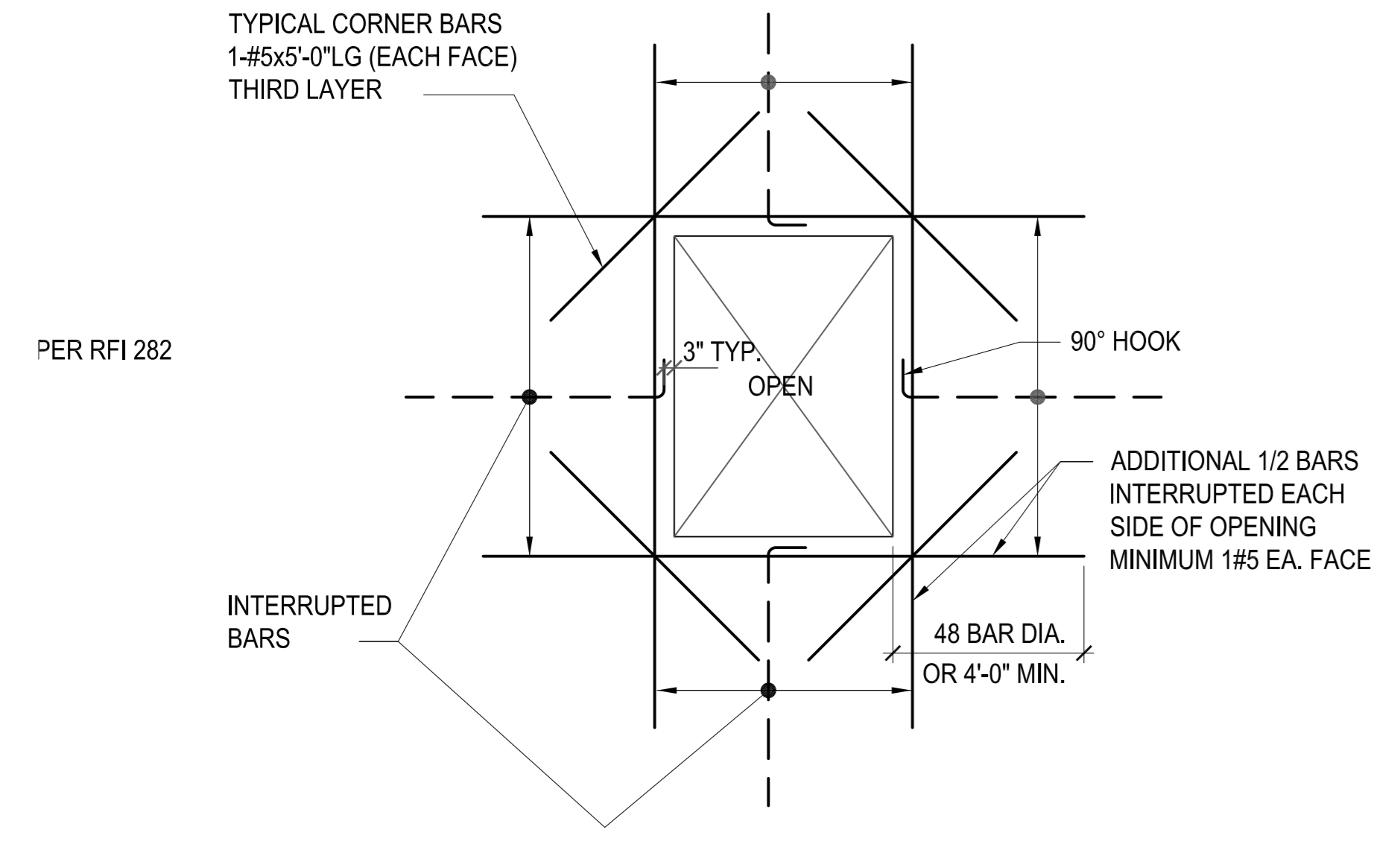
1. FORM KEYWAY AT ALL CONSTRUCTION JOINTS AS LOCATED ON PLANS AND DETAILS
2. APPLY SYNKO-FLEX PRIMER AFTER CONCRETE HAS CURED AT LEAST 24 HOURS.
3. APPLY SYNKO-FLEX WATERSTOP AFTER PRIMER HAS DRIED 2-3 HOURS.
4. OVERLAP ENDS OF STRIPS AT LEAST 1 INCH.
5. FOLLOW MANUFACTURER'S INSTRUCTIONS.
6. THIS DETAIL APPLIES TO ALL WALL AND SLAB HORIZONTAL AND VERTICAL CONSTRUCTION JOINTS, UNLESS OTHERWISE INDICATED.

2 CONSTRUCTION JOINT DETAIL FOR WATER CONTAINING STRUCTURES
SCALE: N.T.S.
S508/S509

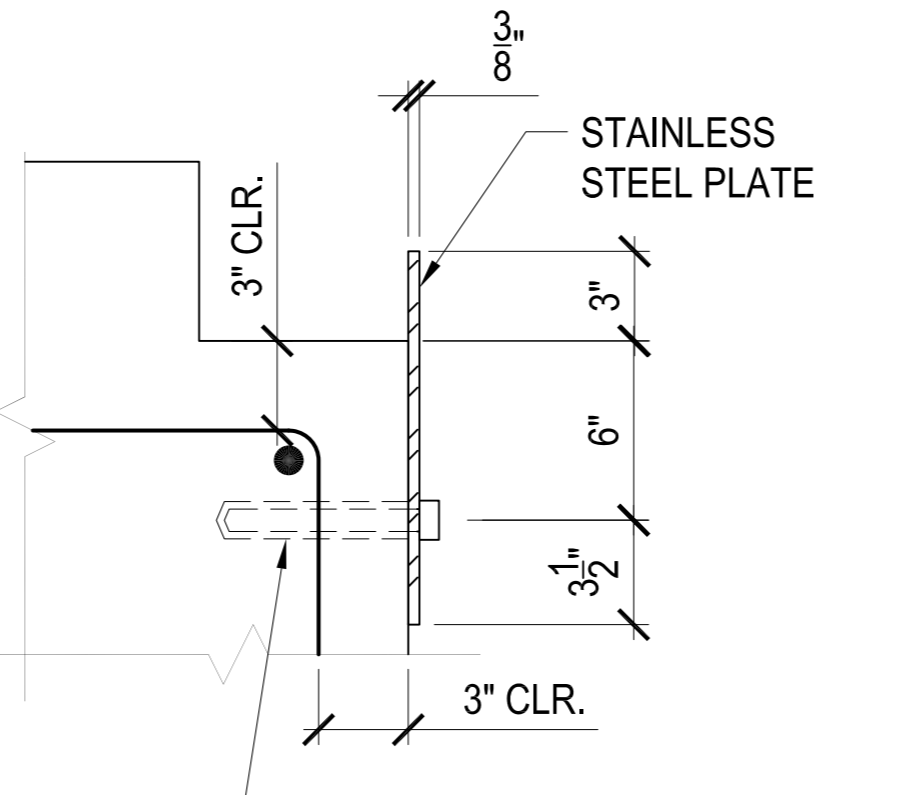
PER NOTE I.I.J. ON S001-CONSTRUCTION JOINT SPACING IS A MAX OF 90 FEET, NO VERTICAL CONTROL JOINTS.
MODIFIED PER RFI 536



3 TYP. SKIMMER DETAIL
SCALE: 3/4"=1'-0"
S112/S509

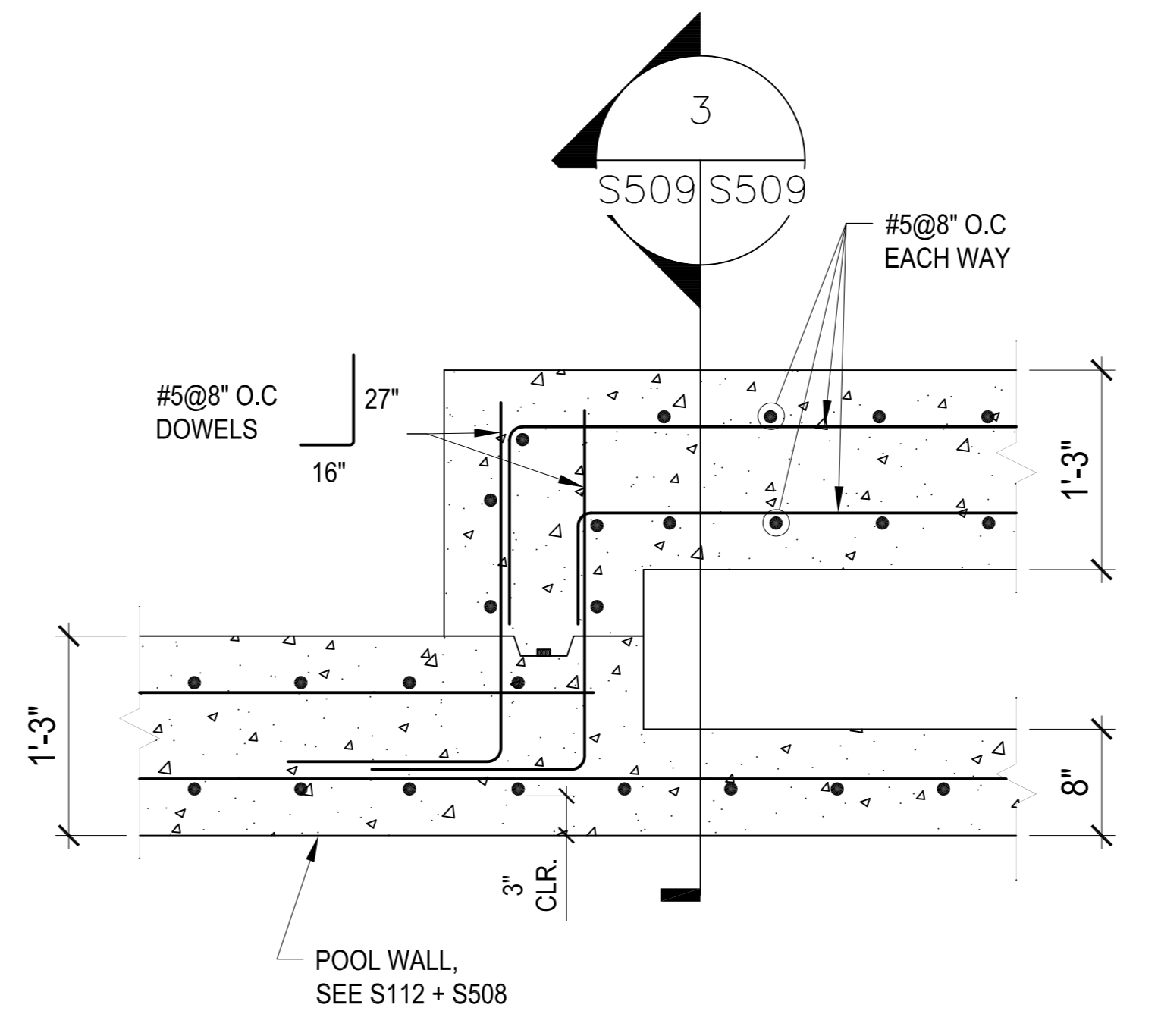


4 TYP. POOL WALL OPENING
SCALE: 3/4"=1'-0"
S112/S509

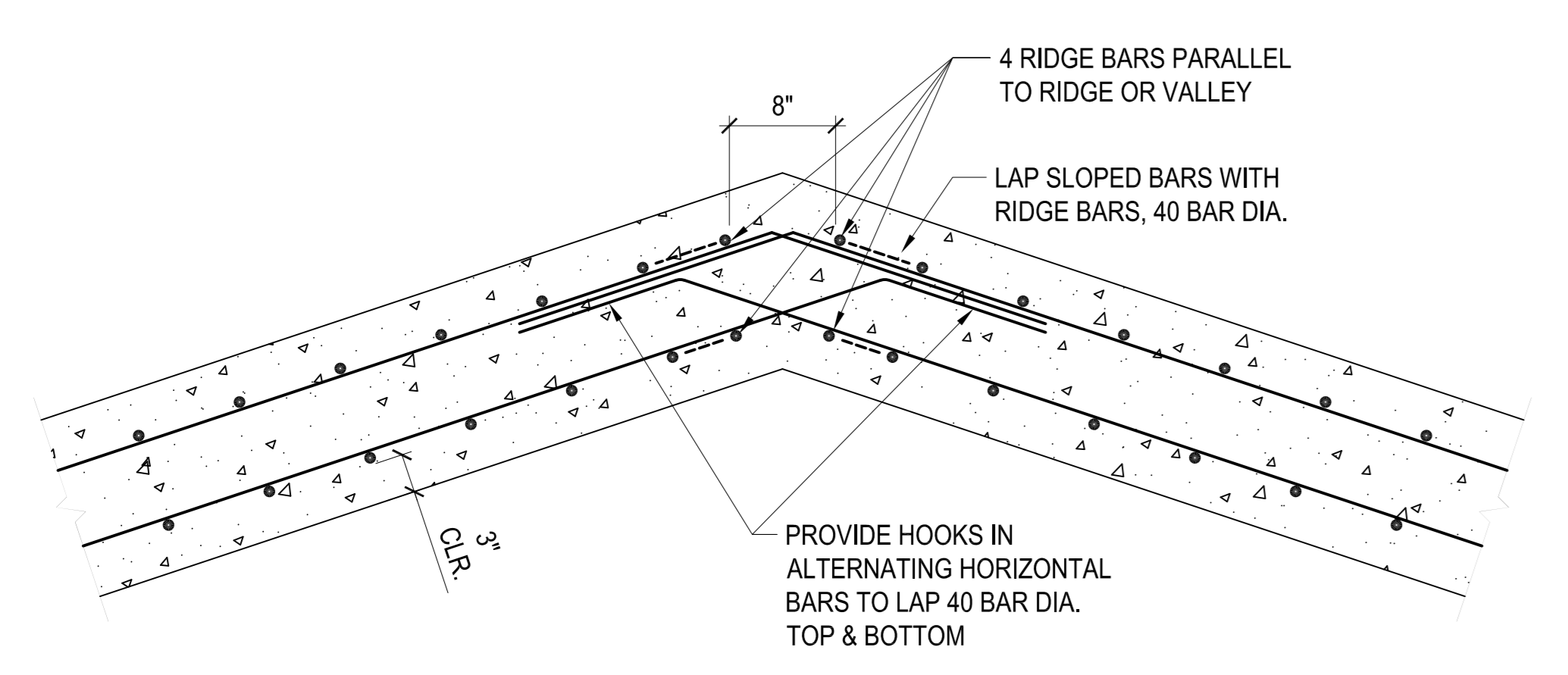


S.S. INTERNALLY THREADED INSERT FOR 3/8" DIA. BOLT @ 3'-0" O.C. W/ FLAT HEADS
FOR UNDERWATER VIEWING AND SPLIT LEVEL VIEWING WINDOWS. DO NOT CONSTRUCT UNTIL DIMENSIONS HAVE BEEN COORDINATED WITH ACRYLIC WINDOW MANUFACTURER. THIS DETAIL IS ONLY TO SUPPORT THE WINDOW FROM WIND AND INCIDENTAL LOADS WHEN THE POOL IS EMPTY. ALTERNATE DETAIL OR DETAIL FOR OTHER CONDITIONS TO BE FURNISHED BY WINDOW MANUFACTURER AND REVIEWED BY COTR.

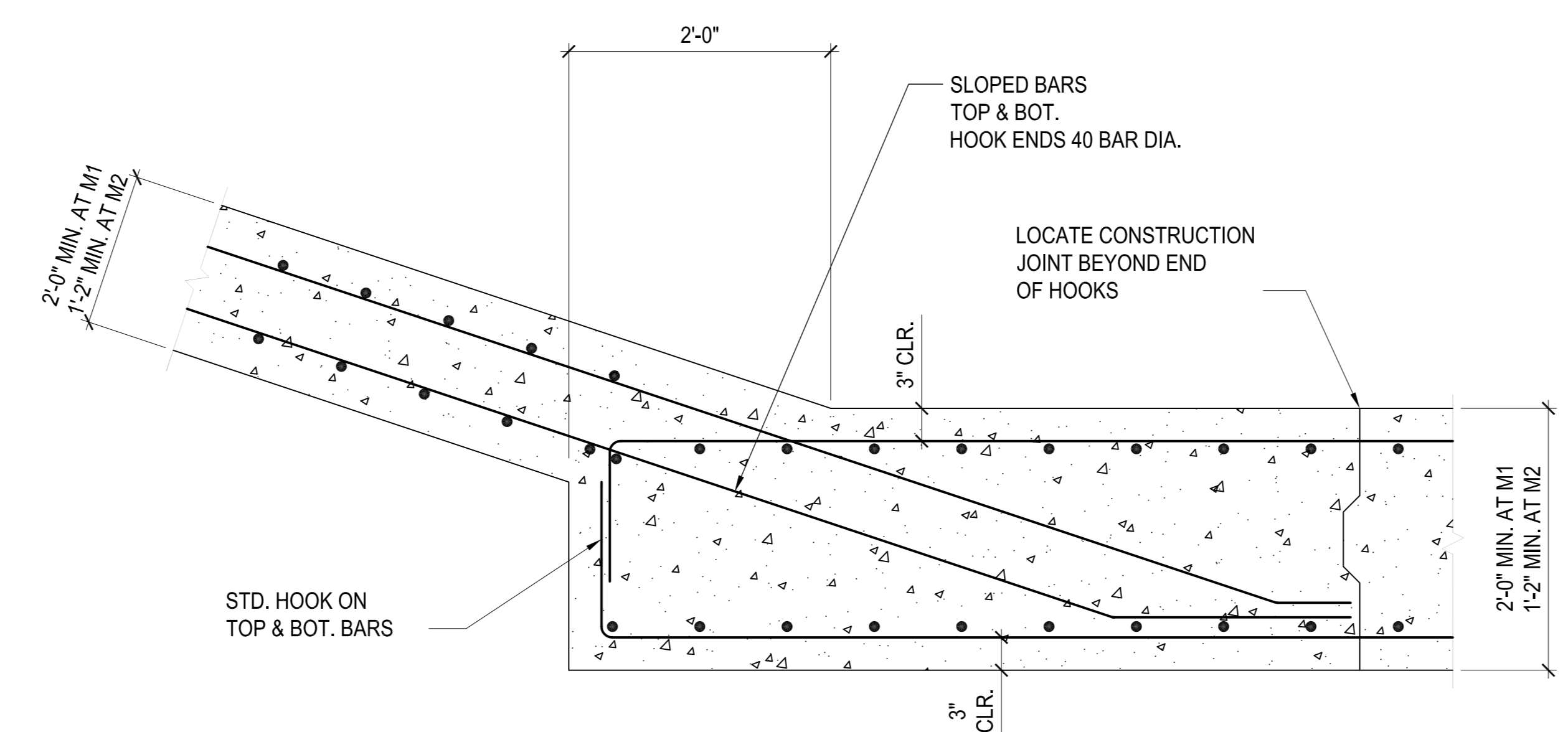
5 VIEWING WINDOW EDGE PLATE
SCALE: 1 1/2"=1'-0"
S508/S509



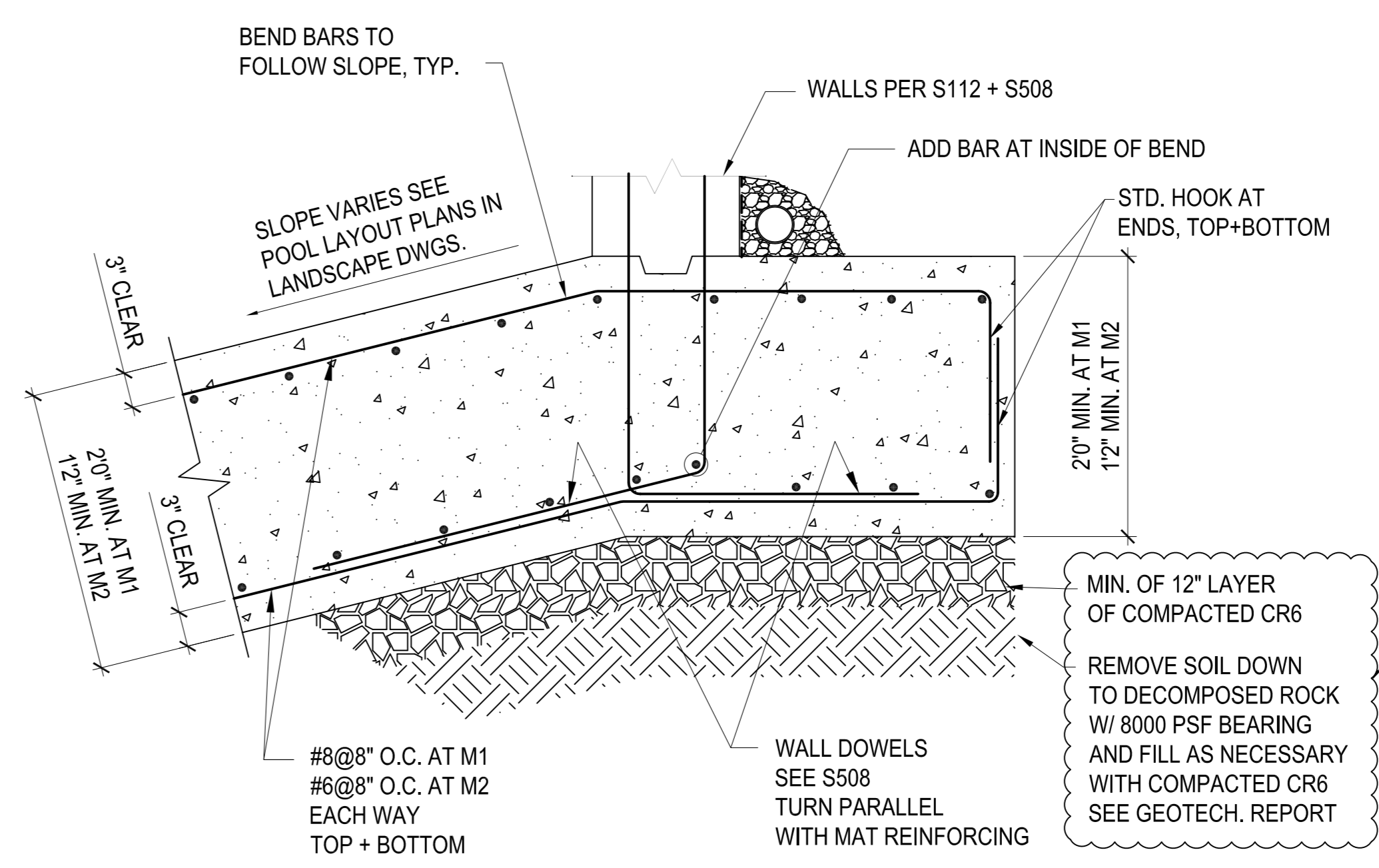
6 SKIMMER DETAIL
SCALE: 3/4"=1'-0"
S509/S509



7 POOL MAT RIDGE DETAIL
SCALE: 1"=1'-0"
S112/S509



8 POOL MAT TRANSITION DETAIL
SCALE: 1"=1'-0"
S112/S509

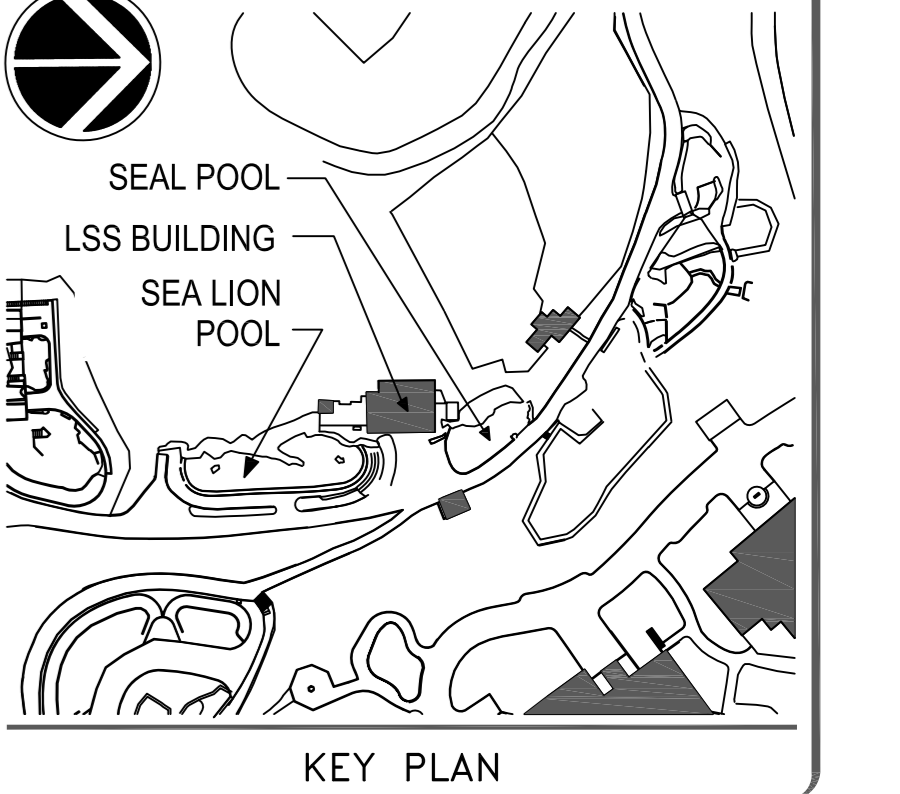


9 MAT M1 + M2
SCALE: 3/4"=1'-0"
S508/S509

QUINN EVANS ARCHITECTS
1214 Twenty-eighth Street, NW
Washington, DC 20228
202 298 6700 (0007) 202 298 6666
www.quinn-evans.com

McMullan & Associates Consulting Structural Engineers
8381 OLD COURTHOUSE RD.
VIENNA, VA 22182-5809
PHONE: (703) 556-0651
#5472-12-M001
© COPYRIGHT 2008 McMullan & Associates Inc. ALL RIGHTS RESERVED WORLDWIDE

AS BUILT



GRAPHIC SCALE(S)

| DATE | SUBMISSION |
|------------|-----------------|
| 07/02/09 | FINAL DOCUMENTS |
| REVISION 1 | REVISION |
| REVISION 2 | REVISION |
| REVISION 3 | REVISION |
| REVISION 4 | REVISION |
| REVISION 5 | REVISION |
| REVISION 6 | REVISION |
| REVISION 7 | REVISION |

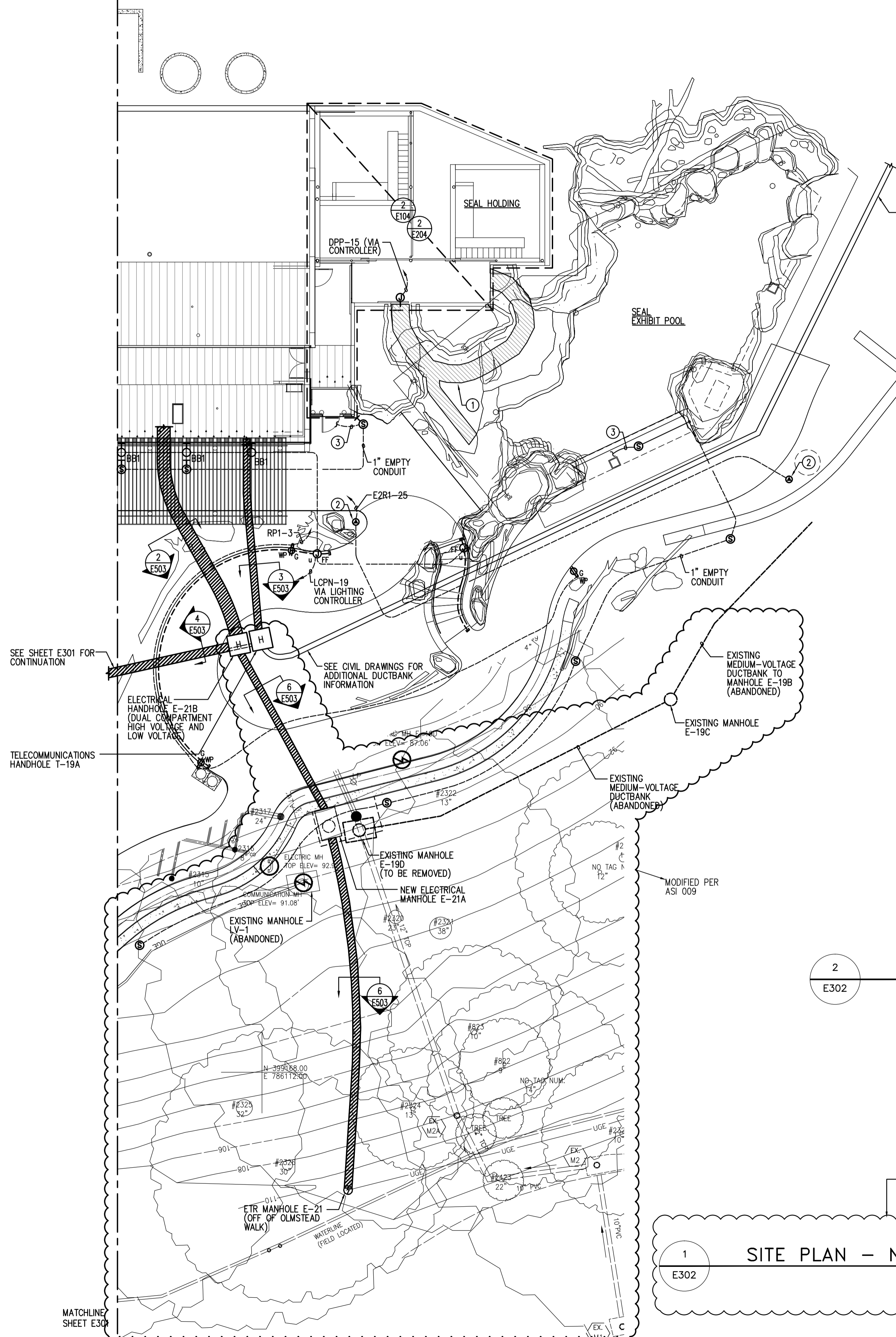
Office of Facilities Engineering and Operations
600 Maryland Avenue S.W. Suite 5101
Washington DC 20024-2520

Smithsonian Institution

| | |
|---------------------|--|
| BUILDING NAME | SEAL & SEA LION BUILDING |
| ADDRESS | SMITHSONIAN NATIONAL ZOO 3001 CONN. AVENUE, NW |
| PROJECT TITLE | SEAL/SEA LION LIFE SUPPORT, FACILITY, AND SITE RENEWAL |
| CFED PROJECT NUMBER | 0533148 |
| A/E PROJECT NUMBER | 06221.02 |
| DRAWING TITLE | SECTIONS & DETAILS |
| DRAWING TYPE | STRUCTURAL |
| WORKING STAFF | DW JAW DB |
| DESIGNED BY | DRAWN BY |
| CHECKED BY | |
| SHEET NO. | S 5 09 |
| 182 OF 375 | DISCIPLINE TYPE SEQUENCE |

Z:\PROJECTS\SEA, SEA LION - (AS BUILT)\WORKING - STRUCTURAL\2472-12-M01-S509.DWG

MATCHLINE SHEET E301



GENERAL NOTES:

A. INFORMATION SHOWN ON THIS DRAWING PERTAINING TO EXISTING CONDITIONS HAS BEEN OBTAINED FROM AVAILABLE BUILDING DRAWINGS OR GENERAL FIELD OBSERVATIONS AND MAY NOT INDICATE ACTUAL EXISTING CONDITIONS IN DETAIL OR DIMENSION. THE CONTRACTOR IS RESPONSIBLE FOR DETERMINING THE ACTUAL EXISTING CONDITIONS PRIOR TO FABRICATION OR PERFORMANCE OF ANY WORK. SHOULD CONDITIONS BE DISCOVERED THAT PREVENT EXECUTION OF THE NEW WORK AS INDICATED, THE CONTRACTOR SHALL IMMEDIATELY NOTIFY THE COTR IN WRITING AND AWAIT DIRECTION BEFORE PROCEEDING WITH THE WORK.

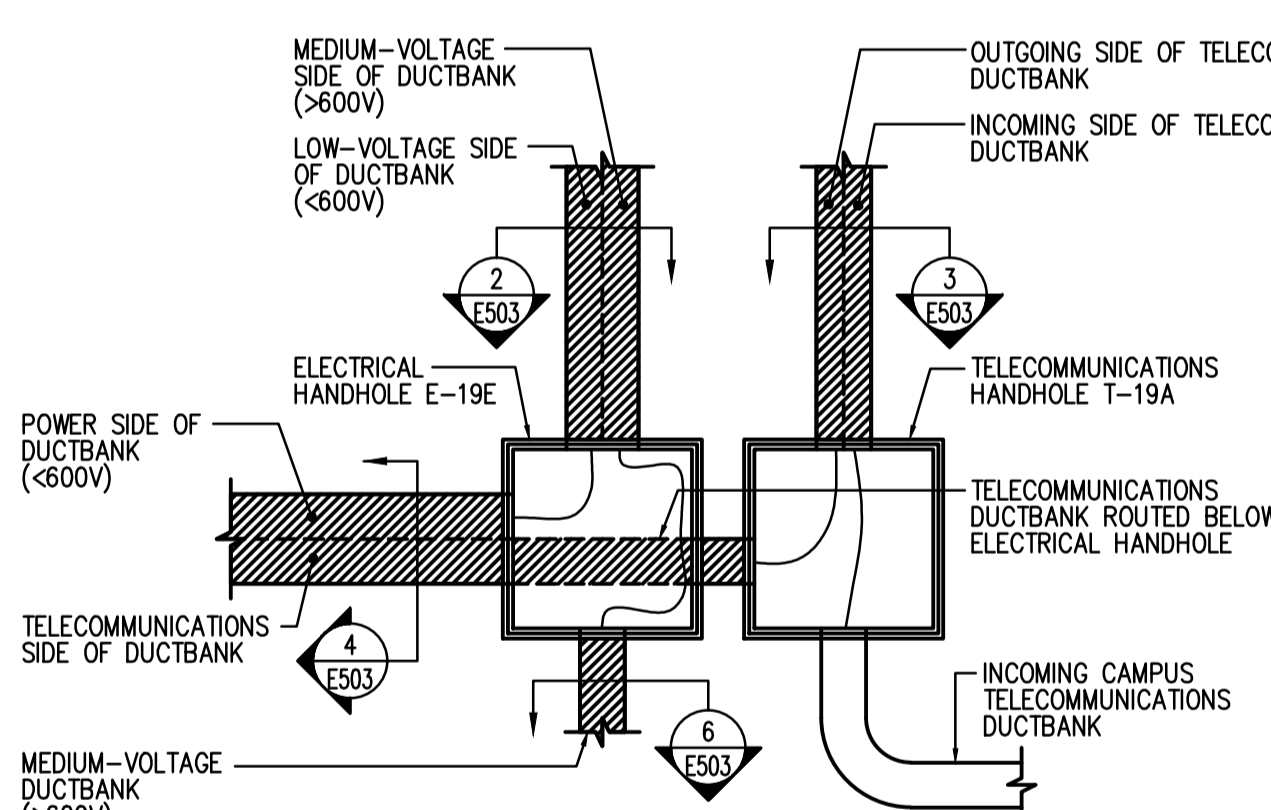
SPECIFIC NOTES:

- 1 AREA OF SNOWMELT SYSTEM. PROVIDE ELECTRIC HEAT CABLE IN THIS AREA AS NECESSARY TO PROVIDE A HEAT DENSITY OF 35 WATTS PER SQUARE FOOT.
 - 2 PROVIDE CONNECTION TO SECURITY CAMERA POWER SUPPLY UNIT. COORDINATE EXACT LOCATION WITH SECURITY DRAWINGS. POWER CONDUITS BETWEEN SECURITY CAMERAS SHOULD BE COORDINATED WITH OTHER OPTICAL CABLE ROUTING AND OTHER TRADES WITHIN THE EFFECTED AREA.
 - 3 PROVIDE 1" EMPTY CONDUIT TO FIRST FLOOR WATER QUALITY LAB, RM. 1.12. COORDINATE ROUTE WITHIN THE BUILDING CEILING SPACE AND TRANSITION UNDERGROUND AT THE EXTERIOR WALL. PROVIDE PULL BOXES AND HANDHOLES AS NECESSARY TO FACILITATE PULLING OF SPEAKER CABLES.
- A1) RACEWAYS FOR ANTENNAS ARE TO BE 1" PVC CONDUIT
A2) ANTENNAE CABLING, INSTALLED BY OTHERS, EACH (OF FOUR) NEED TO BE HOMERUN TO WATER QUALITY LAB. ALL FOUR CABLES MAY BE GANGED TOGETHER WHERE THEY CONVERGE, AND PUT INTO A 3" PVC CONDUIT
- THE ONLY REQUIRED DUCT BANKS THE ELECTRICAL DUCT BANK AS SHOWN ON E301 AND E302; ALL UGF IS RUN IN CONDUIT IN GRAVEL TRENCH.
- AS PER AMENDMENTS 3

SEE RFI ON SC002 FOR LOCATIONS OF CAMERAS

AS PER RFI 384.002

SEE CIVIL DRAWINGS FOR ADDITIONAL DUCTBANK INFORMATION
REFER ASI 47



2 PART PLAN - MANHOLE CONFIGURATION DETAIL
SCALE: NO SCALE

1 SITE PLAN - NORTH - ELECTRICAL - NEW WORK
SCALE: 1" = 10'-0"

QUINN EVANS ARCHITECTS

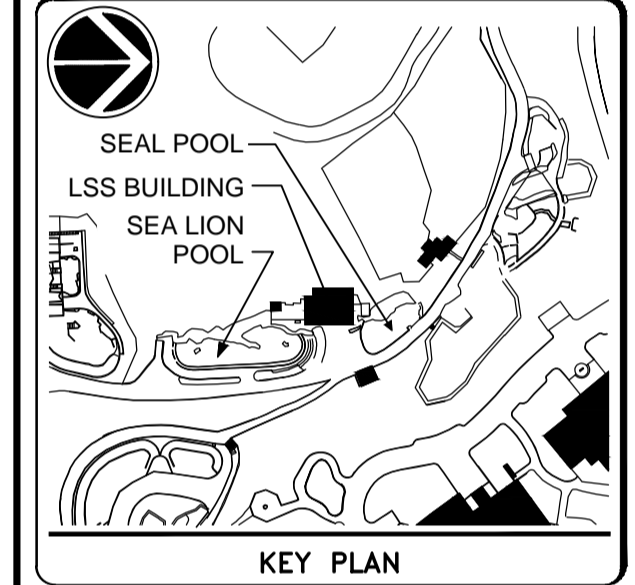
1214 Twenty-eighth Street, NW
Washington, DC 20007

v 202 298 6700 f202 298 6666
www.quinnevans.com

James Posey Associates, Inc. PECC
Consulting Engineers

Comm. No. 5393-06 Established 1911

AS BUILT



10 5 0 10 20
SCALE: 1" = 10'-0"

GRAPHIC SCALE(S)

| | | | |
|------------|-------------|------------|-----------------|
| DATE | 07/02/09 | REVISION | FINAL DOCUMENTS |
| REVISION 1 | CA-08/14/09 | REVISION 2 | CA-04/28/10 |
| REVISION 3 | | REVISION 4 | |
| REVISION 5 | | REVISION 6 | |
| REVISION 7 | | | |

Smithsonian Institution

Office of Facilities Engineering and Operations
600 Maryland Avenue S.W., Suite 5001
Washington DC 20024-2520

| | |
|--------------------|---|
| BUILDING NAME | SEAL & SEA LION BUILDING |
| ADDRESS | SMITHSONIAN NATIONAL ZOO 3001 CONN. AVENUE, NW |
| PROJECT TITLE | SEAL/SEA LION LIFE SUPPORT FACILITY AND SITE RENEWAL |
| OPD PROJECT NUMBER | 0533148 |
| A/E PROJECT NUMBER | 06221.02 |
| DRAWING TITLE | SITE PLAN - NORTH ELECTRICAL - NEW WORK |
| DRAWING TYPE | ELECTRICAL |
| WORKING STAFF | TMC SRG REL |
| SHEET NO. | E 3 02 |
| 338 OF 375 | |

April 29, 2010 7:50 a.m.
Drawing: E:\338-06\338022.dwg

Note: This Electronic Information is made available to for informational purposes only. Neither Forrester Construction nor any other party whatsoever accepts any responsibility for the accuracy, adequacy, sufficiency, compliance with applicable law, or any error or omission in, any information contained in the Electronic Document. Neither Forrester Construction nor any other party make any warranties whatsoever with respect to the Information (and hereby disclaim any implied warranties, including any implied warranty of accuracy), and any use of the Electronic Information shall be at users sole risk. This is not a Contract Document and, before using the Electronic Information, the user shall check the Electronic Information for consistency with the Contract Documents. The user agrees to defend and indemnify Forrester Construction from and against all claims, liabilities, losses, damages and costs, including attorneys' fees, arising out of the use of the Electronic Information. Forrester Construction does not permit use of this document in providing services or materials for any Project, and does not provide the right to use this document in preparation of any Derivative Documents.