

SUBMITTAL REVIEW

To: Lewis Howie
Mark G. Anderson Consultants
730 Eleventh Street NW
Washington, DC 20001

Date: 19 October 2011

RE: **Seal and Sea Lion Life Support, Facility,
and Site Renewal**



QUINN EVANS
ARCHITECTS

1214 TWENTY-EIGHTH ST, NW
WASHINGTON, DC 20007
202 298 6700

ATTN: Meghan Davis

THIS SUBMITTAL REVIEW INCLUDES THE FOLLOWING ENCLOSURES:

Submittal	Date	Description
16A-0024-264400-1	19 October 2011	JPA/TPG Comments
16A-0024-264400-1	27 September 2011	Electrical Snow Melting System Submittals

First Submission Second Submission Third Submission Other

THIS SUBMITTAL HAS BEEN REVIEWED AND IS BEING RETURNED MARKED:

Approved Approved as Noted Returned for Correction Disapproved

Returned Without Review / Received for Information Only

This review was performed only for general conformance with the design concept of the project and general compliance with the information given in the Construction Documents. Modifications or comments made on the shop drawings during this review do not relieve contractor from compliance with the requirements of the plans and specifications. Approval of a specific item does not include approval of the assembly of which the item is a component. Contractor is responsible for: dimensions to be confirmed and correlated at the job site; information that pertains solely to the fabrication processes or to the means, methods, techniques, sequences, and procedures of construction; coordination of the work of all trades; and for performing all work in a safe and satisfactory manner.

NOTES:

Please refer to reviewer comments for more information.

END OF NOTES

WASHINGTON, DC
ANN ARBOR, MI
DETROIT, MI
MADISON, WI

CC: _____

Signature: _____

James Posey Associates, Inc.
Consulting Engineers

3112
 Lord Baltimore
 Drive
 Baltimore
 Maryland
 21244
410-265-6100
 Fax
 410-298-9820

Letter of Transmittal

To: **Quinn Evans | Architects**
1214 Twenty-Eighth Street, NW
Washington, DC 20007

Date: **October 19, 2011**

Comm. No: **5393-06**

Attn.: **Mr. James Thompson, AIA**

Re: **SI NZP Seal & Sea Lions Exhibit**
LSS Bldg – Construction

WE ARE TRANSMITTING:

- Attached
 Hand Delivered
 Original Drawings
 Prints
 Disk(s)
 Under Separate Cover
 VIA eMail
 Submittals
 Specifications
 See Below

COPIES	DATE	NO.	DESCRIPTION	CODE
1	10/18/11	--	Submittals – Electric Snow Melt System (26 4400)	B

- AS REQUESTED
 FOR YOUR USE
 FOR YOUR REVIEW AND COMMENT

- CODES**
- A: APPROVED
 - B: APPROVED AS NOTED
 - C: RETURNED FOR CORRECTIONS
 - D: DISAPPROVED
 - E: COMMENTS ATTACHED
 - F:

REMARKS:

Copy to: File

Signed: _____
Thomas Clippinger, PE, LEED

If enclosures are not as noted, please notify us at once.

SUBMITTAL REVIEW

Page 1 of 1

Baltimore
Maryland
21244

410-265-6100

Fax
410-298-9820

**PROJECT: Smithsonian Institution,
National Zoological Park Seals & Sea Lions Exhibit
LSS Building – Construction Phase**

JPA COMM. NO.: 5393-06

CONTRACTOR: Forrester Construction Co.; Freestate Electric;

MANUFACTURER: Tyco; ETI

ITEM SUBMITTED: Electric Snow Melt System

SPECIFICATION SECTION: 26 4400; 16A-0024-264400-1

SUBMITTAL STATUS: Approved as Noted

JPA REVIEWER: T. Clippinger

DATE: October 18, 2011

The below comments are based on review of the resubmittal for the electric snow melt system. The resubmittal was limited to supplied sketches. Previous review comments from the initial review (Oct 27, 2010) still apply.

Items to be addressed:

- 1. All sketches: The system layout sketches are not clear as to the wiring of the precipitation sensors and high-temperature limit sensors. Per manufacturer's recommendations, the high-temperature limit sensor wiring should not pass through the precipitation sensor assembly. Instead, it should be run in a separate conduit. This could be run to a common junction box, and then run back to the building controllers along with the precipitation sensor wiring.**
- 2. Sketch SM-5: The precipitation sensor in the Animal Recovery should be eliminated. Manual control of this zone is acceptable.**
- 3. Sketch SM-4: There is no precipitation sensor located in the Seal Holding or Seal Passage areas. There is concern the system will not operate optimally in these zones without a dedicated sensor. We suggest that the sensor eliminated from Animal Recovery be installed in the Seal Holding area.**
- 4. Sketches SM-1 & 2 : Coordinate the location of the precipitation sensors with SI NZP. Sensors should be positioned with proper exposure and proper elevation in relation to the surrounding surfaces and exhibit elements.**



SNOW MELT SYSTEM

SHOP DRAWING REVIEW FOR SMITHSONIAN INSTITUTION PROJECTS	
<input checked="" type="checkbox"/> A: Approved <input checked="" type="checkbox"/> B: Approved as Noted	<input type="checkbox"/> C: Returned For Corrections <input type="checkbox"/> D: Disapproved
<p>Engineer's review is for general compliance with the design concept and contract documents. Markings of compliance shall not be construed as relieving the Contractor from compliance with the project specifications, nor departed therefrom. The Contractor remains responsible for details, coordination and accuracy, for comparing and correlating all quantities and dimensions, for selecting fabrication processes, for techniques of assembly and for performing his work in a safe manner.</p> <p>James Posey Associates, Inc. Consulting Engineers</p> <p>SHOP DRAWING No. <u>16A-0024-264400-1</u></p> <p>By <u>TMC</u> Date <u>10/18/11</u></p>	

- RESUBMITTAL -

(16A-0024-264400-1)



Submittal Transmittal

Detailed, Grouped by Each Number

NZP Seal/Sea Lion LSF & Site Renewal
National Zoological Park
3001 Connecticut Ave, NW
Washington DC 20008

Project # 09-99-0043
Tel: Fax:

Forrester Construction Company

Date: 9/27/2011

Reference Number: 1205

Transmitted To: Muller, Marc
Smithsonian Institution
Office of Engineering and Operation
General Services Building, Level 1
3001 Connecticut Ave, NW
Washington, DC 20008

Transmitted By: Salvi, Nikhil
Forrester Construction
12231 Parklawn Drive
Rockville, MD 20852
Tel: 301-816-1700
Fax: 301-816-1701

Qty	Submittal Package No	Description	Due Date	Package Action
1	16A-0024 - 264400 - 1	Electrical Snow Melting system submittals	10/17/2011	Submitted for Record

Transmitted For	Delivered Via	Tracking Number
Record	Email	

Items	Qty	Register No	Description	Notes	Item Action
0001	1	01712-1	Electrical Snow Melting system Shop Drawings		Submitted for Record

Cc:	Company Name	Contact Name	Copies	Notes

Remarks

Signature

Signed Date

SUBMITTAL NO: _____

PROJECT: NZP Seal/Sea Lion LSF & Site Renewal

Shop Drawings

Samples

Product Data Sheets

Project Information

Other

ORIGINAL SUBMITTAL, For Designer(s) Approval

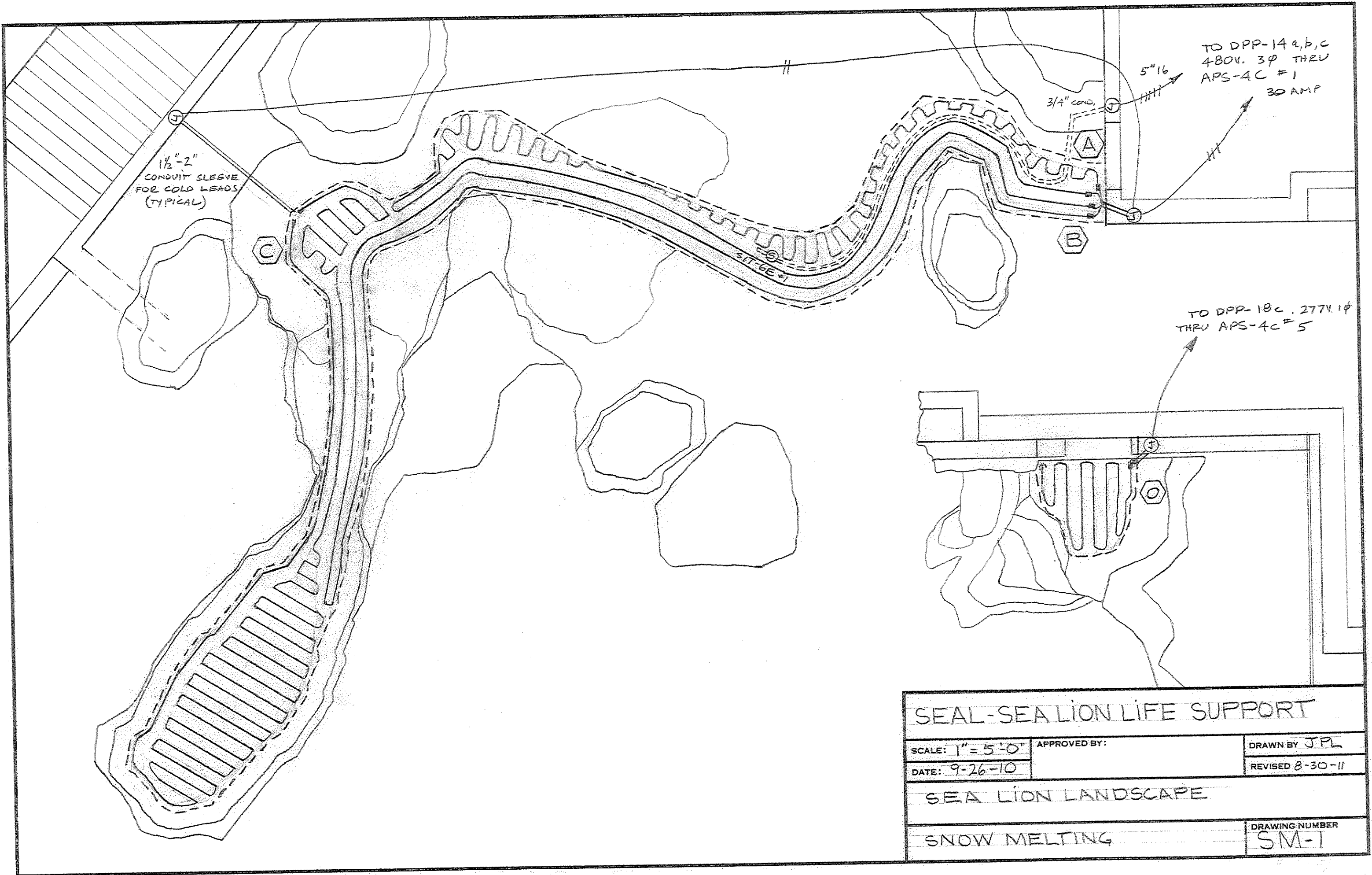
RE-SUBMITTAL, For Designer(s) Approval

THE ITEMS COVERED BY THIS SUBMITTAL ARE BEING
SUBMITTED BY FORRESTER CONSTRUCTION COMPANY TO
THE DESIGNER(S) OF RECORD FOR THEIR REVIEW, APPROVAL,
AND ACCEPTANCE FOR USE ON THIS PROJECT, IN
COMPLIANCE WITH THE CONTRACT DOCUMENTS

BY: _____



DATE: _____



TO DPP-14 a,b,c
480V. 3P THRU
APS-4C #1
30 AMP

1/2"-2"
CONDUIT SLEEVE
FOR COLD LEADS
(TYPICAL)

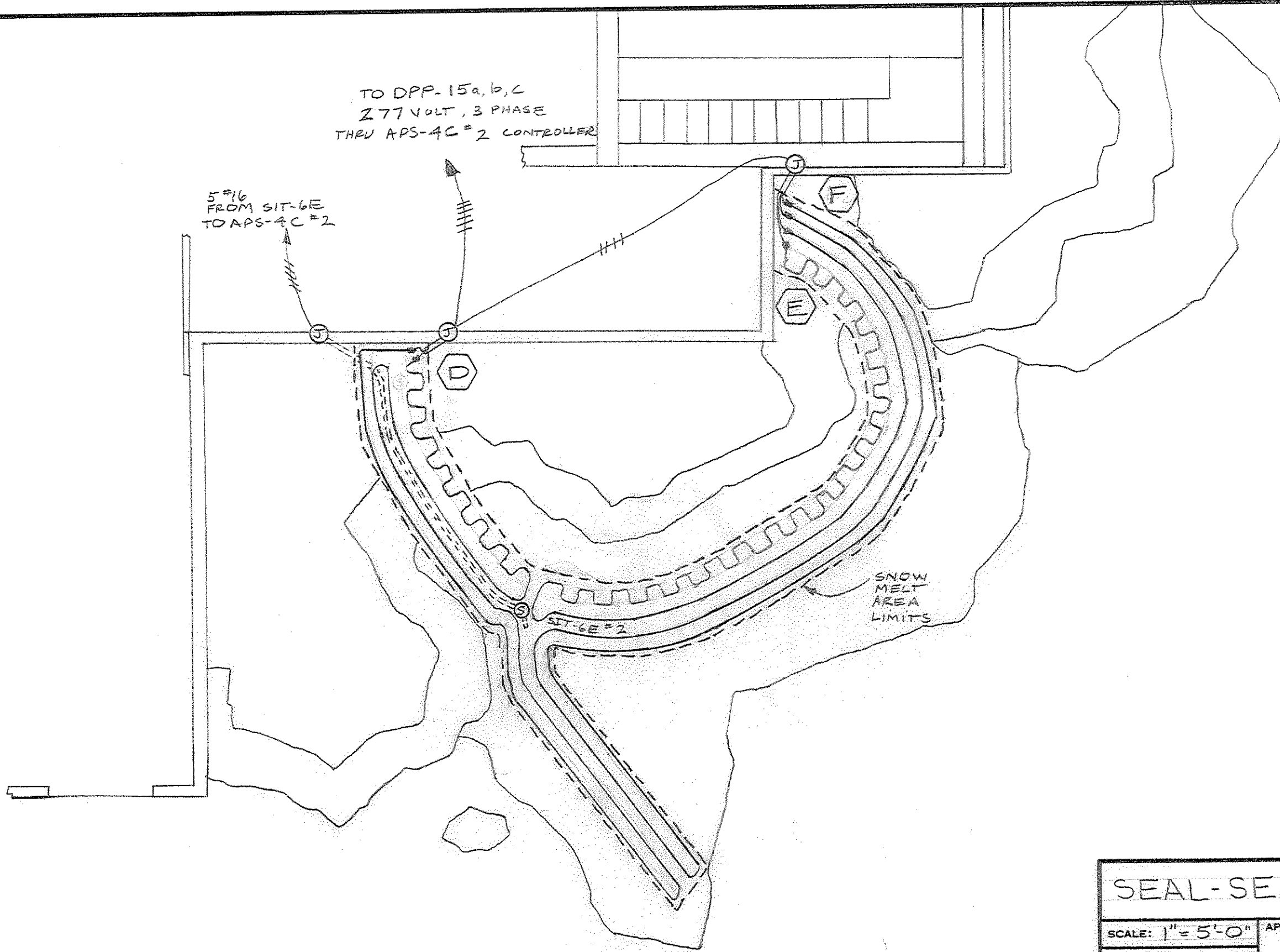
TO DPP-18c . 277V 1P
THRU APS-4C #5

SEAL-SEA LION LIFE SUPPORT

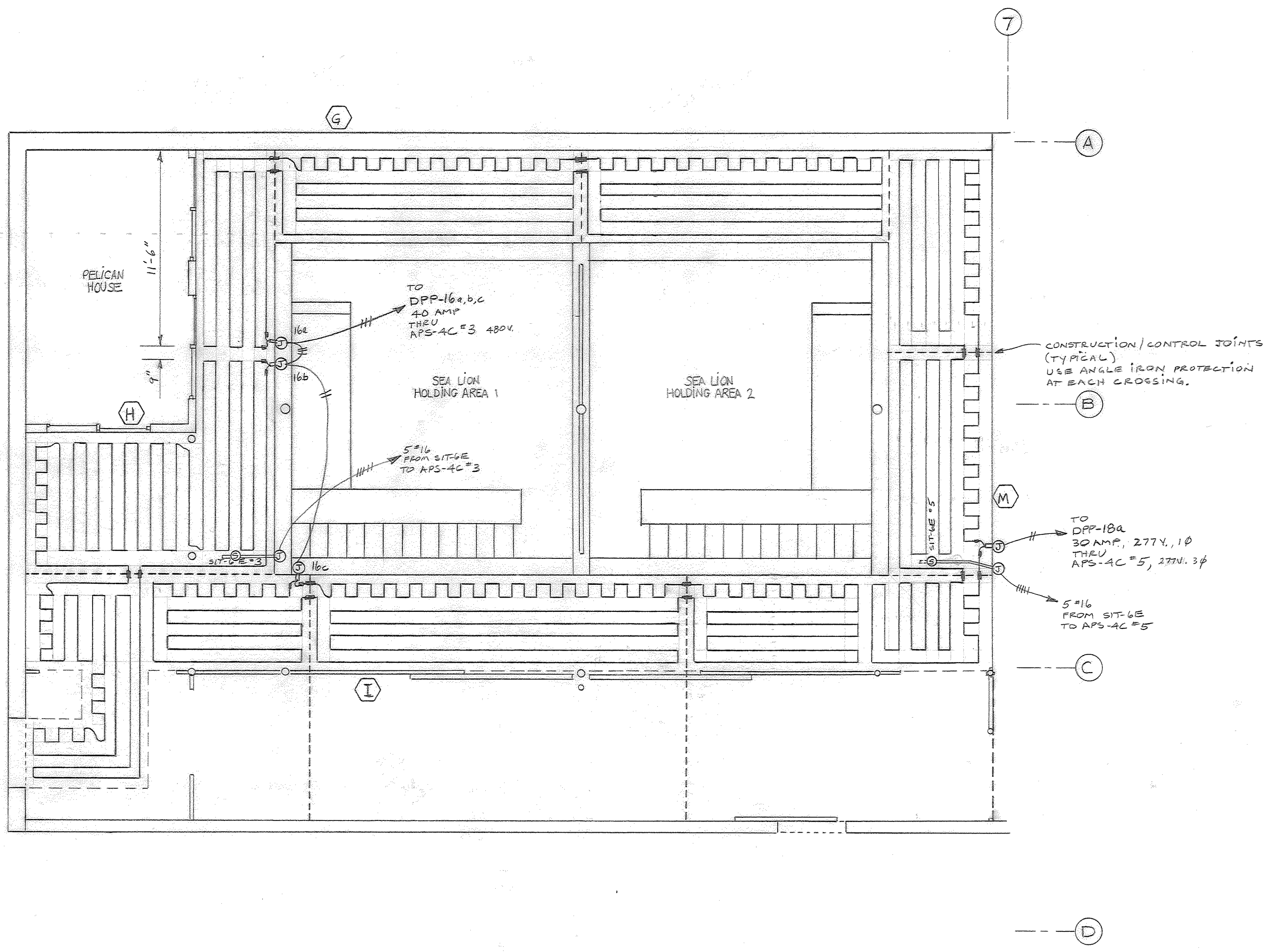
SCALE: 1" = 5'-0"	APPROVED BY:	DRAWN BY JPL
DATE: 9-26-10		REVISED 8-30-11

SEA LION LANDSCAPE

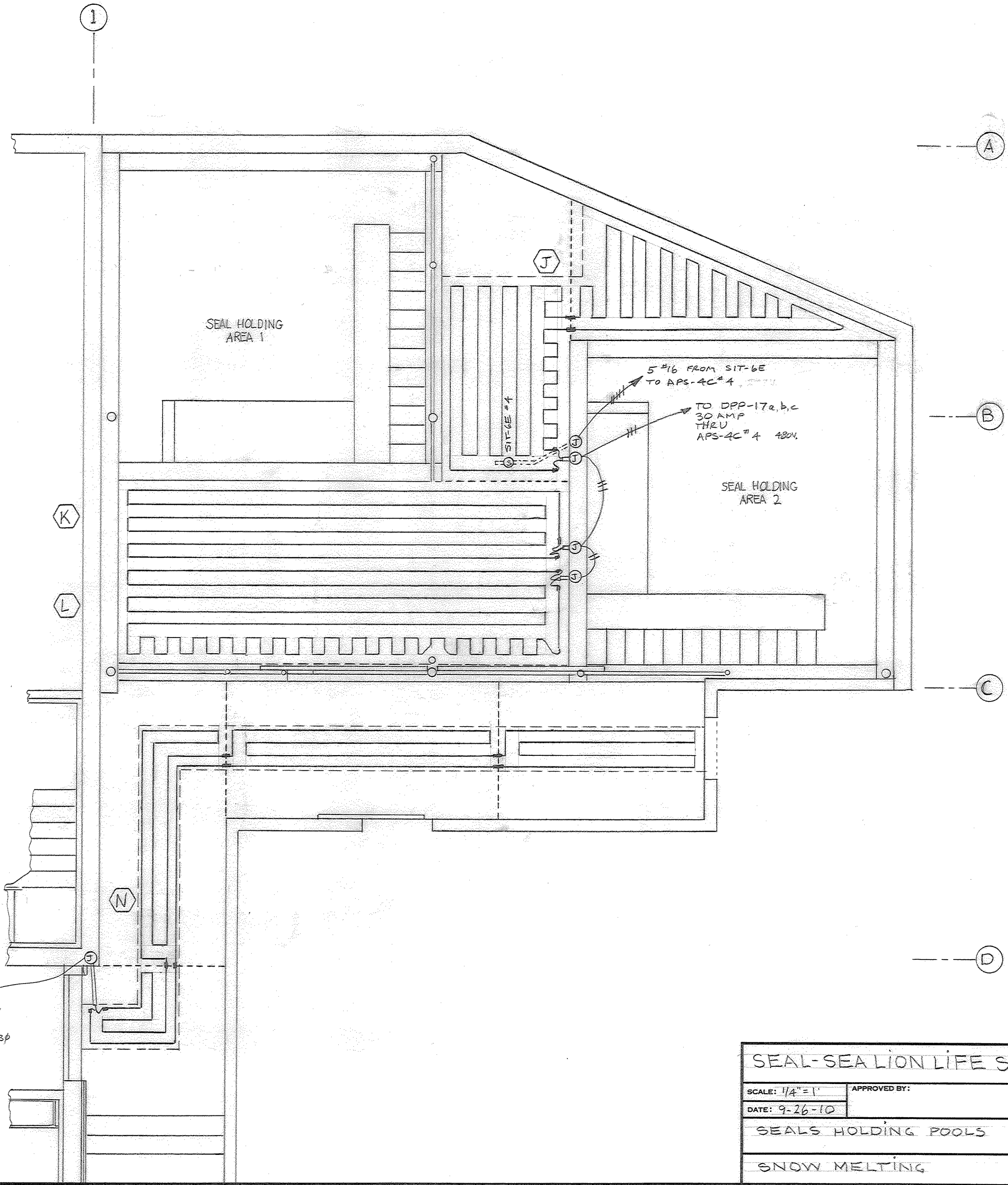
SNOW MELTING	DRAWING NUMBER SM-1
--------------	------------------------



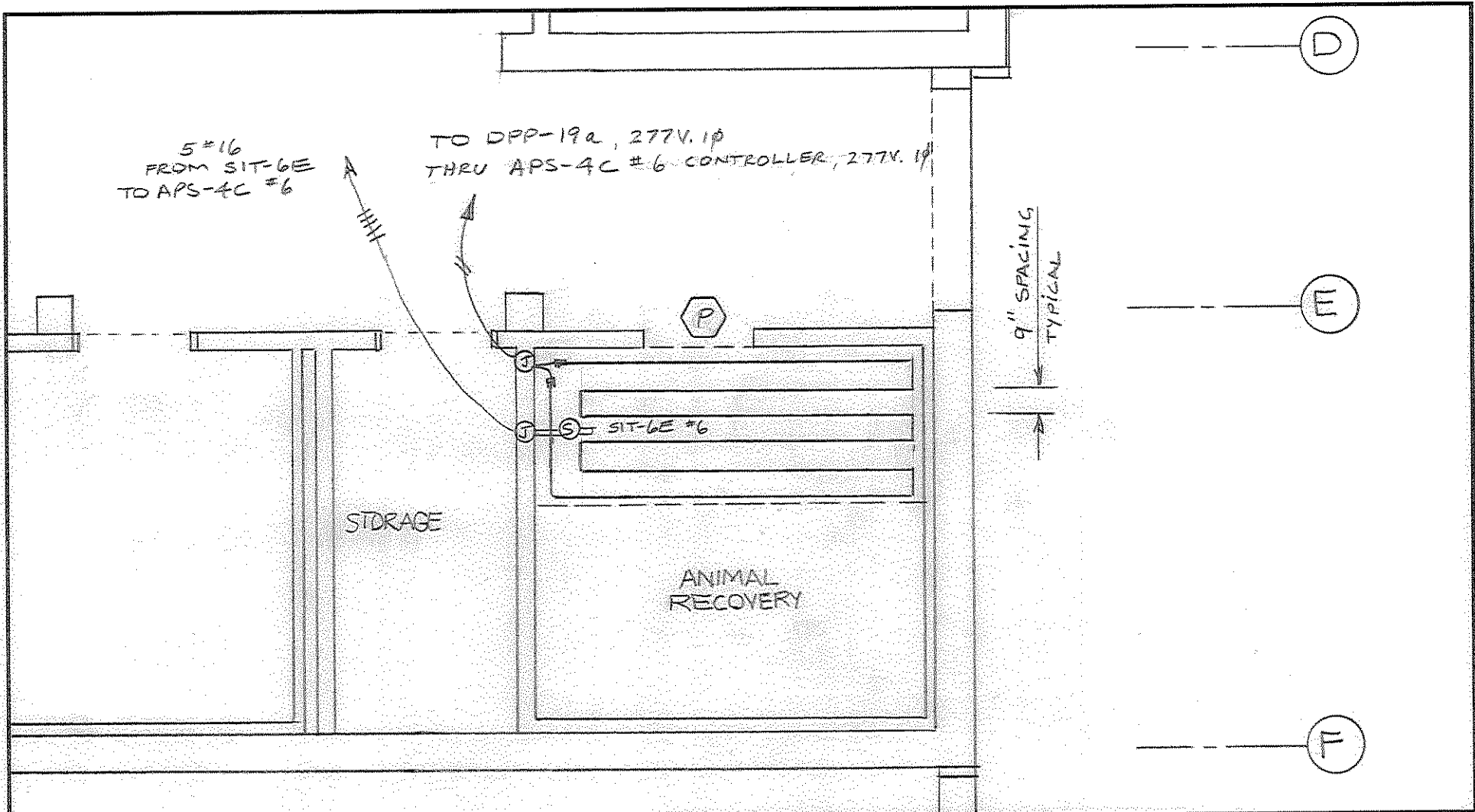
SEAL-SEA LION LIFE SUPPORT		
SCALE: 1" = 5'-0"	APPROVED BY:	DRAWN BY JPL
DATE: 9-26-10		REVISED 8-30-11
SEAL LANDSCAPE		
SNOW MELTING		DRAWING NUMBER SM-2



SEAL-SEA LION LIFE SUPPORT		
SCALE: 1/4"=1'	APPROVED BY:	DRAWN BY JPL
DATE: 9-26-10		REVISED 8-30-11
SEA LION HOLDING POOLS		
SNOW MELTING		DRAWING NUMBER SM-3



SEAL-SEALION LIFE SUPPORT		
SCALE: 1/4"=1'	APPROVED BY:	DRAWN BY JPL
DATE: 9-26-10		REVISED 8-30-11
SEALS HOLDING POOLS		
SNOW MELTING		DRAWING NUMBER SM-4



SEAL-SEA LION LIFE SUPPORT		
SCALE: 1/4" = 1'	APPROVED BY:	DRAWN BY: JPL
DATE: 9-26-10		REVISED: 8-30-11
LSS BUILDING-GROUND FLOOR		
SNOW MELTING		DRAWING NUMBER: SM-5